

RL-2227

FILTER CHOKES

DESCRIPTION

- Filter Chokes

ENVIRONMENTAL DATA

- Storage temperature range: -55°C to +130°C
- Operating temperature range: -40°C to +130°C

PACKAGING INFORMATION

- Packaging information: pg. 493

FEATURES & APPLICATIONS

- High current ferrite core inductors ideally suited for noise filtering in switching regulated power supplies, power filter networks, power amplifiers, SCR, and TRIAC control circuits
- Polyolefin shrink tube cover is used to protect and insulate outer windings
- Manufactured with pre-tinned radial leads for easy PCB insertion

Verify operation with sample in actual circuit. Order samples at www.rencousa.com.

MECHANICAL DIMENSIONS

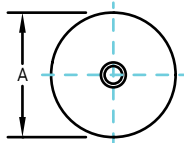
U.S. Standard (mm)

PART NUMBER	A (MAX.)	B (MAX.)	C (MIN.)
RL-2227-1-50	0.475 (12.06)	0.800 (20.32)	0.500 (12.70)
RL-2227-1-100	0.475 (12.06)	0.800 (20.32)	0.687 (17.45)
RL-2227-1-250	0.475 (12.06)	1.050 (26.67)	0.437 (11.10)
RL-2227-1-500	0.550 (13.97)	1.050 (26.67)	0.750 (19.05)
RL-2227-1-1000	0.550 (13.97)	1.225 (30.80)	0.937 (23.80)

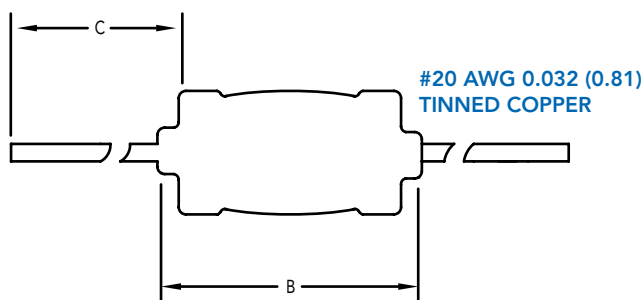
PART NUMBER	PART WEIGHT
RL-2227-1	12.0g (0.43oz)
RL-2227-2	13.0g (0.46oz)
RL-2227-3	14.0g (0.49oz)
RL-2227-5	18.0g (0.64oz)

DIMENSIONS CONTINUED ON NEXT PAGE

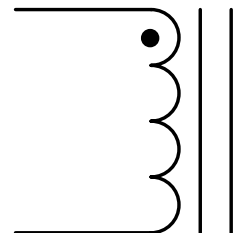
FRONT VIEW



SIDE VIEW



SCHEMATIC



RENCO ELECTRONICS INC.

595 International Place, Rockledge, FL 32955-4200 USA • www.rencousa.com • ISO 9001 Certified
Toll Free Engineering Hot Line: 800.645.5828 • P: 321.637.1000 • F: 321.637.1600



RL-2227

MECHANICAL DIMENSIONS (CONTINUED)

U.S. Standard (mm)

Renco Part No. RL-2227	A (MAX.)	B (MAX.)	C (MIN.)
RL-2227-2-27	0.500 (12.70)	0.800 (20.32)	1.25 (31.75)
RL-2227-2-50	0.500 (12.70)	0.800 (20.32)	1.25 (31.75)
RL-2227-2-100	0.500 (12.70)	0.920 (23.37)	1.25 (31.75)
RL-2227-2-250	0.600 (15.24)	0.920 (23.37)	1.25 (31.75)
RL-2227-2-500	0.750 (19.05)	1.050 (26.67)	1.25 (31.75)
RL-2227-3-5	0.475 (12.06)	0.800 (20.32)	1.25 (31.75)
RL-2227-3-10	0.475 (12.06)	0.920 (23.37)	1.25 (31.75)
RL-2227-3-27	0.550 (13.97)	0.800 (20.32)	1.25 (31.75)
RL-2227-3-50	0.550 (13.97)	0.920 (23.37)	1.25 (31.75)
RL-2227-3-100	0.550 (13.97)	1.225 (30.80)	1.25 (31.75)
RL-2227-5-5	0.475 (12.06)	1.050 (26.67)	1.00 (25.40)
RL-2227-5-10	0.475 (12.06)	1.050 (26.67)	1.00 (25.40)
RL-2227-5-27	0.700 (17.78)	1.050 (26.67)	1.00 (25.40)
RL-2227-5-50	0.700 (17.78)	1.050 (26.67)	1.00 (25.40)
RL-2227-5-100	0.700 (17.78)	1.300 (33.02)	1.00 (25.40)

ELECTRICAL SPECIFICATIONS

Renco Part No. RL-2227	Inductance (μ H)	I _{rms} (A)	DCR Max. (Ohms)	SRF
RL-2227-1-50	50.0	1.0	0.120	4.0
RL-2227-1-100	100.0	1.0	0.180	2.0
RL-2227-1-250	250.0	1.0	0.300	1.0
RL-2227-1-500	500.0	1.0	0.500	0.8
RL-2227-1-1000	1000.0	1.0	0.600	0.5
RL-2227-2-27	27.0	2.0	0.085	5.5
RL-2227-2-50	50.0	2.0	0.100	4.0
RL-2227-2-100	100.0	2.0	0.150	2.0
RL-2227-2-250	250.0	2.0	0.250	1.0
RL-2227-2-500	500.0	2.0	0.450	0.5
RL-2227-3-5	5.0	3.0	0.025	25.0
RL-2227-3-10	10.0	3.0	0.035	20.0
RL-2227-3-27	27.0	3.0	0.050	6.0
RL-2227-3-50	50.0	3.0	0.065	4.0
RL-2227-3-100	100.0	3.0	0.075	2.0
RL-2227-5-5	5.0	5.0	0.015	50.0
RL-2227-5-10	10.0	5.0	0.025	40.0
RL-2227-5-27	27.0	5.0	0.035	7.0
RL-2227-5-50	50.0	5.0	0.050	2.0
RL-2227-5-100	100.0	5.0	0.065	1.0

NOTES:

1. ELECTRICAL SPECIFICATIONS MEASURED AT 25°C
2. I_{sat} - DC CURRENT THAT WILL CAUSE INDUCTANCE TO DROP BY 5%
3. I_{rms} - CURRENT THAT CAUSES THE TEMPERATURE TO RISE APPROX. 40°C ABOVE AMBIENT OF 25°C
4. INDUCTANCE \pm 10% TESTED AT 10 kHz, 0.1 V_{rms}
5. PART FINISHED WITH 135°C POLYOLEFIN SLEEVING THAT MEETS UL-224 VW-1



RENCO ELECTRONICS INC.

595 International Place, Rockledge, FL 32955-4200 USA • www.rencousa.com • ISO 9001 Certified
Toll Free Engineering Hot Line: 800.645.5828 • P: 321.637.1000 • F: 321.637.1600

