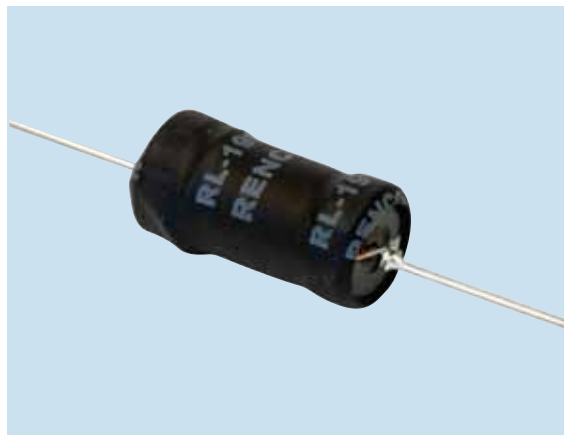


NATIONAL SEMICONDUCTOR SIMPLE SWITCHER APPLICATIONS



DESCRIPTION

- Powerline Choke

ENVIRONMENTAL DATA

- Storage temperature range: -55°C to +130°C
- Operating temperature range: -40°C to +130°C

PACKAGING INFORMATION

- Contact Customer Support 800.645.5828

FEATURES & APPLICATIONS

- This series of powerline chokes has inductance values from 100 μ H to 680 μ H with saturation currents available from 0.70 A to 2.79 A
- High-saturation material makes coils ideal for use in switching regulated power supply applications
- The size of the coils make them easy to install in equipment

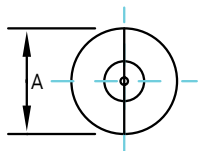
Verify operation with sample in actual circuit. Order samples at www.rencousa.com.

MECHANICAL DIMENSIONS

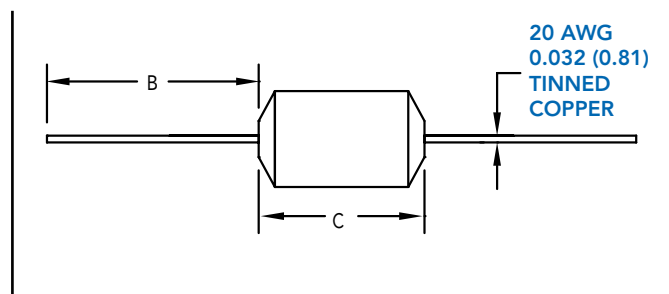
U.S. Standard (mm)

PART NUMBER	A (MAX.)	B (MIN.)	C (MAX.)	PART WEIGHT
RL-1950	0.453 (11.51)	1.00 (25.40)	0.900 (22.86)	2.9g (0.10oz)
RL-1951	0.453 (11.51)	1.00 (25.40)	0.900 (22.86)	2.9g (0.10oz)
RL-1952	0.453 (11.51)	1.00 (25.40)	0.900 (22.86)	2.9g (0.10oz)
RL-1953	0.453 (11.51)	1.00 (25.40)	0.900 (22.86)	2.9g (0.10oz)
RL-1955	0.453 (11.51)	1.00 (25.40)	0.900 (22.86)	2.9g (0.10oz)
RL-3901	0.250 (6.35)	1.00 (25.40)	0.650 (16.51)	1.7g (0.06oz)

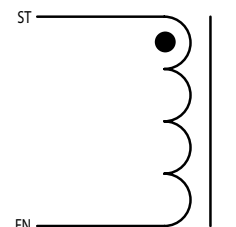
TOP VIEW



SIDE VIEW



SCHEMATIC



RENCO ELECTRONICS INC.

595 International Place, Rockledge, FL 32955-4200 USA • www.rencousa.com • ISO 9001 Certified
Toll Free Engineering Hot Line: 800.645.5828 • P: 321.637.1000 • F: 321.637.1600



NATIONAL SEMICONDUCTOR

Renco Part No.	Inductance (μ H)	DCR Max. (Ohms)	Isat (A)	Irms (A)
RL-1950	680.0	0.575	0.70	1.00
RL-1951	470.0	0.400	0.82	1.20
RL-1952	330.0	0.300	1.00	1.60
RL-1953	220.0	0.175	1.25	1.60
RL-1955	100.0	0.090	2.79	1.60
RL-3901	330.0	0.665	0.70	0.40

NOTES:

1. INDUCTANCE \pm 10% TESTED AT 10 kHz, 0.1 Vrms
2. ELECTRICAL SPECIFICATIONS MEASURED AT 25°C
3. Isat - DC CURRENT THAT WILL CAUSE INDUCTANCE TO DROP BY 5%
4. Irms - CURRENT THAT CAUSES THE TEMPERATURE TO RISE APPROX. 40°C ABOVE AMBIENT OF 25°C

