



RL-1606

LOW DCR/LOW PROFILE SMD POWER INDUCTORS

DESCRIPTION

- Low Profile SMD Power Inductor

ENVIRONMENTAL DATA

- Storage temperature range: -55°C to +130°C
- Operating temperature range: -40°C to +130°C

PACKAGING INFORMATION

- Packaging information: pg. 504

FEATURES & APPLICATIONS

- Low profile
- Constructed in a rugged case to provide optimum pick and place operations
- High inductance/high current ultra low profile power inductor
- Excellent as DC-DC converter used in notebook computers, cell phones, step-up or step-down converters, and flash memory

Verify operation with sample in actual circuit. Order samples at www.rencousa.com.

MECHANICAL DIMENSIONS

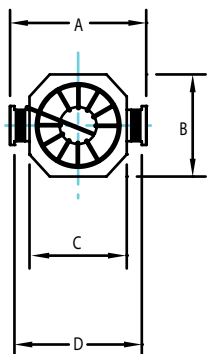
U.S. Standard (mm)

PART NUMBER	A (MAX.)	B (MAX.)	C ±0.012 (0.3)	D ±0.012 (0.3)	E (MAX.)	F (REF.)
RL-1606	0.287 (7.3)	0.217 (5.5)	0.197 (5.0)	0.252 (6.4)	0.079 (2.0)	0.157 (4.0)

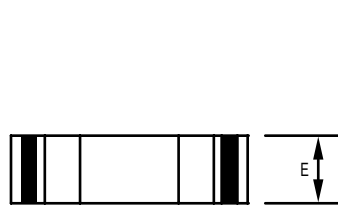
PART NUMBER	PART WEIGHT
RL-1606	0.23g (0.008oz)

G (REF.)	H (REF.)
0.063 (1.6)	0.098 (2.5)

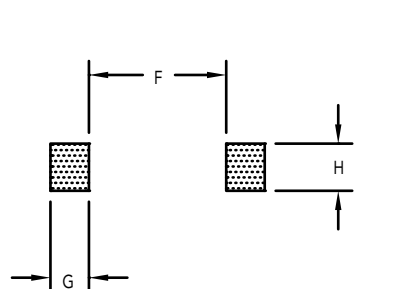
BOTTOM VIEW



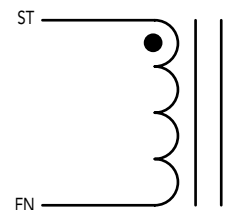
SIDE VIEW



RECOMMENDED LAND PATTERN



SCHEMATIC



RENCO ELECTRONICS INC.

595 International Place, Rockledge, FL 32955-4200 USA • www.rencousa.com • ISO 9001 Certified
Toll Free Engineering Hot Line: 800.645.5828 • P: 321.637.1000 • F: 321.637.1600



RL-1606

Renco Part No. RL-1606	Inductance (μ H)	DCR Max. (Ohms)	Isat (A)	Irms (A)	SRF (MHz)
RL-1606-1R0M	1.0 \pm 20%	0.050	2.60	2.00	160.0
RL-1606-1R5M	1.5 \pm 20%	0.060	1.90	1.80	150.0
RL-1606-2R2M	2.2 \pm 20%	0.070	1.80	1.70	140.0
RL-1606-3R3M	3.3 \pm 20%	0.080	1.50	1.50	100.0
RL-1606-4R7M	4.7 \pm 20%	0.100	1.30	1.40	90.0
RL-1606-6R8M	6.8 \pm 20%	0.140	1.00	1.10	80.0
RL-1606-100M	10.0 \pm 20%	0.170	0.80	1.00	70.0
RL-1606-150M	15.0 \pm 20%	0.280	0.70	0.80	60.0
RL-1606-220M	22.0 \pm 20%	0.340	0.60	0.70	40.0

NOTES:

1. Isat - DC CURRENT THAT WILL CAUSE INDUCTANCE TO DROP BY 30%
2. Irms - CURRENT THAT CAUSES THE TEMPERATURE TO RISE APPROX. 40°C ABOVE AMBIENT OF 25°C
3. RATED CURRENT: BASED ON TEMPERATURE AND Δ L/LOA = 30% TYPICAL AT Isat
4. ELECTRICAL SPECIFICATIONS MEASURED AT 25°C
5. INDUCTANCE TESTED AT 100 kHz, 0.1 Vrms

