

# RL-1325

## RL-1326

### MIL-T-27D POWER LINE CHOKES

#### DESCRIPTION

- Powerline Choke

#### ENVIRONMENTAL DATA

- Storage temperature range: -55°C to +130°C
- Operating temperature range: -40°C to +130°C

#### PACKAGING INFORMATION

- Packaging information: pg.

#### FEATURES & APPLICATIONS

- Meets MIL-T-27D, Class-S specifications
- 99 values offer a wide range of standard inductances from 3.9  $\mu\text{H}$  to 100,000  $\mu\text{H}$  and saturation currents from 14.7 A to 0.077 A
- Typical applications include: switching regulators, power amplifiers, power supplies, SCR and TRIAC Controls, RFI suppression, filters, reactors, power inductors, and audio inductors

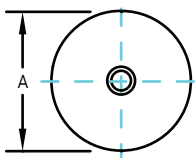
Verify operation with sample in actual circuit. Order samples at [www.rencousa.com](http://www.rencousa.com).

#### MECHANICAL DIMENSIONS

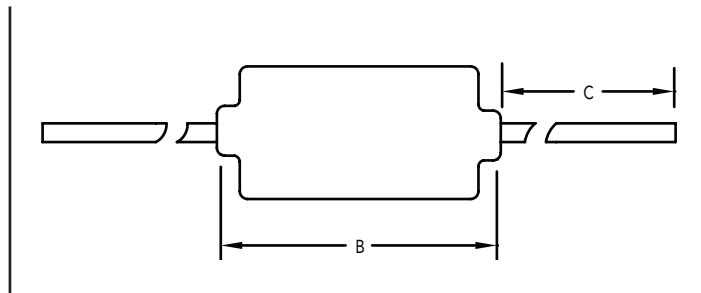
U.S. Standard (mm)

PART NUMBER	A	B	C (MIN.)	PART WEIGHT
RL-1325	0.500 (12.70) $\pm$ 0.015 (0.380)	0.250 (6.35) $\pm$ 0.015 (0.380)	1.000 (25.40)	10.0g (0.35oz)
RL-1326	1.000 (25.40) $\pm$ 0.030 (0.761)	0.675 (17.15) $\pm$ 0.030 (0.761)	1.000 (25.40)	2.0g (0.071oz)

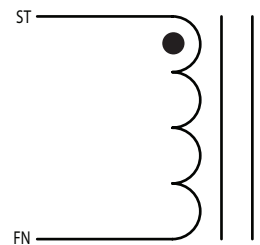
TOP VIEW



SIDE VIEW



SCHEMATIC



**RENCO ELECTRONICS INC.**

595 International Place, Rockledge, FL 32955-4200 USA • [www.rencousa.com](http://www.rencousa.com) • ISO 9001 Certified  
Toll Free Engineering Hot Line: 800.645.5828 • P: 321.637.1000 • F: 321.637.1600



# RL-1325

Renco Part No. RL-1325	Inductance ( $\mu$ H) @ 10 kHz	DCR Max. (Ohms)	Isat (A)	Irms (A)
RL-1235-3.9	3.9	0.008	15.500	4.0
RL-1325-4.7	4.7	0.009	13.900	4.0
RL-1325-5.6	5.6	0.010	12.600	4.0
RL-1325-6.8	6.8	0.012	11.600	4.0
RL-1325-8.2	8.2	0.014	9.890	4.0
RL-1325-10	10.0	0.014	8.700	4.0
RL-1325-12	12.0	0.021	8.210	4.0
RL-1325-15	15.0	0.024	7.340	4.0
RL-1325-18	18.0	0.025	6.640	4.0
RL-1325-22	22.0	0.029	6.070	4.0
RL-1325-27	27.0	0.030	5.360	4.0
RL-1325-33	33.0	0.035	4.820	4.0
RL-1325-39	39.0	0.036	4.360	4.0
RL-1325-47	47.0	0.039	3.980	4.0
RL-1325-56	56.0	0.041	3.660	3.2
RL-1325-68	68.0	0.048	3.310	2.5
RL-1325-82	82.0	0.066	3.100	2.0
RL-1325-100	100.0	0.070	2.790	1.6
RL-1325-120	120.0	0.099	2.540	1.6
RL-1325-150	150.0	0.118	2.220	1.6
RL-1325-180	180.0	0.135	1.980	1.6
RL-1325-220	220.0	0.152	1.890	1.6
RL-1325-270	270.0	0.178	1.630	1.6
RL-1325-330	330.0	0.201	1.510	1.6
RL-1325-390	390.0	0.233	1.390	1.6
RL-1325-470	470.0	0.309	1.240	1.2
RL-1325-560	560.0	0.396	1.170	1.0
RL-1325-680	680.0	0.444	1.050	1.0
RL-1325-820	820.0	0.603	0.970	0.8
RL-1325-1000	1000.0	0.684	0.870	0.8
RL-1325-1200	1200.0	0.972	0.790	0.6
RL-1325-1500	1500.0	1.140	0.700	0.6
RL-1325-1800	1800.0	1.300	0.640	0.6
RL-1325-2200	2200.0	1.730	0.580	0.5
RL-1325-2700	2700.0	2.270	0.530	0.4
RL-1325-3300	3300.0	2.780	0.470	0.4
RL-1325-3900	3900.0	3.030	0.430	0.4
RL-1325-4700	4700.0	3.510	0.390	0.4
RL-1325-5600	5600.0	4.310	0.359	0.315
RL-1325-6800	6800.0	6.260	0.322	0.250

#### NOTES:

1. INDUCTANCES  $\pm$ 15% AT 10 kHz
2. Isat LOWERS INDUCTANCE 5%
3. CASE MATERIAL DIALYL PHTHALATE TYPE SDG-F
4. AVAILABLE TAPED AT REELED FOR AUTO INSERTION
5. LEADS NO. 20 TINNED COPPER 1" LONG MIN.
6. ELECTRICAL SPECIFICATIONS MEASURED AT 25°C
7. Irms - CURRENT THAT CAUSES THE TEMPERATURE TO RISE APPROX. 40°C ABOVE AMBIENT OF 25°C
8. 10% TOLERANCE OPTIONAL
9. NON-STANDARD VALUES AVAILABLE
10. GRADE 5, CLASS S: -55°C TO 130°C
11. MANUFACTURED TO MIL-T-27D\*

\*THE RL-1325, RL-1326 ARE DESIGNED TO MEET MIL-STD-27D, REV.E CLASS S, HOWEVER, THEY ARE NOT CURRENTLY LISTED ON THE DESC. QUALIFIED PRODUCTS LIST.

RL-1325 TABLE CONTINUES ON FOLLOWING PAGE



**RENCO ELECTRONICS INC.**

595 International Place, Rockledge, FL 32955-4200 USA • www.rencousa.com • ISO 9001 Certified  
Toll Free Engineering Hot Line: 800.645.5828 • P: 321.637.1000 • F: 321.637.1600



# RL-1325

Renco Part No. RL-1325	Inductance ( $\mu$ H) @ 10 kHz	DCR Max. (Ohms)	Isat (A)	Irms (A)
RL-1325-8200	8200.0	6.95	0.293	0.250
RL-1325-10000	10000.0	8.03	0.266	0.250
RL-1325-12000	12000.0	10.1	0.241	0.200
RL-1325-15000	15000.0	11.6	0.214	0.200
RL-1325-18000	18000.0	16.3	0.198	0.158
RL-1325-22000	22000.0	24.0	0.180	0.125
RL-1325-27000	27000.0	25.0	0.162	0.125
RL-1325-33000	33000.0	28.3	0.146	0.125
RL-1325-39000	39000.0	35.0	0.135	0.100
RL-1325-47000	47000.0	39.7	0.122	0.100
RL-1325-56000	56000.0	45.0	0.112	0.100
RL-1325-68000	68000.0	63.0	0.101	0.082
RL-1325-82000	82000.0	87.2	0.090	0.065
RL-1325-100000	100000.0	98.7	0.081	0.065

# RL-1326

Renco Part No. RL-1326	Inductance ( $\mu$ H) @ 10 kHz	DCR Max. (Ohms)	Isat (A)	Irms (A)
RL-1326-3.9	3.9	0.019	7.3	1.280
RL-1326-4.7	4.7	0.022	6.8	1.280
RL-1326-5.6	5.6	0.024	5.6	1.280
RL-1326-6.8	6.8	0.025	5.3	1.280
RL-1326-8.2	8.2	0.028	4.5	1.280
RL-1326-10	10.0	0.033	4.1	1.280
RL-1326-12	12.0	0.037	3.6	1.280
RL-1326-15	15.0	0.040	3.3	1.280
RL-1326-18	18.0	0.044	3.0	1.280
RL-1326-22	22.0	0.052	2.7	1.280
RL-1326-27	27.0	0.059	2.5	1.280
RL-1326-33	33.0	0.073	2.2	1.008
RL-1326-39	39.0	0.103	2.0	0.804
RL-1326-47	47.0	0.120	1.8	0.804
RL-1326-56	56.0	0.154	1.7	0.804
RL-1326-68	68.0	0.144	1.5	0.804
RL-1326-82	82.0	0.167	1.4	0.804
RL-1326-100	100.0	0.229	1.2	0.632
RL-1326-120	120.0	0.311	1.1	0.508
RL-1326-150	150.0	0.374	1.0	0.508

**NOTES:**

1. INDUCTANCES  $\pm$ 15% AT 10 kHz
2. Isat LOWERS INDUCTANCE 5%
3. CASE MATERIAL DIALYL PHTHALATE TYPE SDG-F
4. AVAILABLE TAPED AT REELED FOR AUTO INSERTION
5. LEADS NO. 20 TINNED COPPER 1" LONG MIN.
6. ELECTRICAL SPECIFICATIONS MEASURED AT 25°C
7. Irms - CURRENT THAT CAUSES THE TEMPERATURE TO RISE APPROX. 40°C ABOVE AMBIENT OF 25°C
8. 10% TOLERANCE OPTIONAL
9. NON-STANDARD VALUES AVAILABLE
10. GRADE 5, CLASS S: -55°C TO 130°C
11. MANUFACTURED TO MIL-T-27D\*

\*THE RL-1325, RL-1326 ARE DESIGNED TO MEET MIL-STD-27D, REV.E CLASS S, HOWEVER, THEY ARE NOT CURRENTLY LISTED ON THE DESC. QUALIFIED PRODUCTS LIST.

RL-1326 TABLE CONTINUES ON FOLLOWING PAGE



**RENCO ELECTRONICS INC.**

595 International Place, Rockledge, FL 32955-4200 USA • www.rencousa.com • ISO 9001 Certified  
Toll Free Engineering Hot Line: 800.645.5828 • P: 321.637.1000 • F: 321.637.1600



# RL-1326

Renco Part No. RL-1326	Inductance ( $\mu$ H) @ 10 kHz	DCR Max. (Ohms)	Isat (A)	Irms (A)
RL-1326-180	180.0	0.398	0.950	0.508
RL-1326-220	220.0	0.473	0.860	0.508
RL-1326-270	270.0	0.613	0.770	0.400
RL-1326-330	330.0	0.732	0.700	0.400
RL-1326-390	390.0	0.849	0.640	0.400
RL-1326-470	470.0	1.270	0.590	0.315
RL-1326-560	560.0	1.400	0.540	0.315
RL-1326-680	680.0	1.770	0.490	0.250
RL-1326-820	820.0	2.160	0.440	0.200
RL-1326-1000	1000.0	2.530	0.400	0.200
RL-1326-1200	1200.0	2.920	0.350	0.200
RL-1326-1500	1500.0	3.800	0.330	0.158
RL-1326-1800	1800.0	4.430	0.290	0.158
RL-1326-2200	2200.0	4.930	0.270	0.158
RL-1326-2700	2700.0	5.940	0.240	0.125
RL-1326-3300	3300.0	7.720	0.220	0.125
RL-1326-3900	3900.0	9.490	0.200	0.100
RL-1326-4700	4700.0	10.600	0.180	0.100
RL-1326-5600	5600.0	15.300	0.166	0.082
RL-1326-6800	6800.0	17.900	0.151	0.082
RL-1326-8200	8200.0	22.900	0.136	0.065
RL-1326-10000	10000.0	29.000	0.125	0.050
RL-1326-12000	12000.0	32.900	0.114	0.050
RL-1326-15000	15000.0	46.800	0.098	0.039
RL-1326-18000	18000.0	53.100	0.091	0.039

**NOTES:**

1. INDUCTANCES  $\pm$ 15% AT 10 kHz
2. Isat LOWERS INDUCTANCE 5%
3. CASE MATERIAL DIALLYL PHTHALATE TYPE SDG-F
4. AVAILABLE TAPED AT REELED FOR AUTO INSERTION
5. LEADS NO. 20 TINNED COPPER 1" LONG MIN.
6. ELECTRICAL SPECIFICATIONS MEASURED AT 25°C
7. I<sub>rms</sub> - CURRENT THAT CAUSES THE TEMPERATURE TO RISE APPROX. 40°C ABOVE AMBIENT OF 25°C
8. 10% TOLERANCE OPTIONAL
9. NON-STANDARD VALUES AVAILABLE
10. GRADE 5, CLASS S: -55°C TO 130°C
11. MANUFACTURED TO MIL-T-27D\*

\*THE RL-1325, RL-1326 ARE DESIGNED TO MEET MIL-STD-27D, REV.E CLASS S, HOWEVER, THEY ARE NOT CURRENTLY LISTED ON THE DESC. QUALIFIED PRODUCTS LIST.



**RENCO ELECTRONICS INC.**

595 International Place, Rockledge, FL 32955-4200 USA • [www.rencousa.com](http://www.rencousa.com) • ISO 9001 Certified  
Toll Free Engineering Hot Line: 800.645.5828 • P: 321.637.1000 • F: 321.637.1600

