

# RL-1293

## AXIAL LEADED HIGH FREQUENCY INDUCTOR

### DESCRIPTION

- Axial Leaded Inductor

### ENVIRONMENTAL DATA

- Storage temperature range: -55°C to +130°C
- Operating temperature range: -40°C to +130°C

### PACKAGING INFORMATION

- Packaging information: pgs. 503, 507

### FEATURES & APPLICATIONS

- Engineered for low loss in high frequency switching applications
- 43 standard values ranging from 3.9μH to 12,000μH
- Rated currents to 4 A and saturations up to 8.20 ADC
- Typical applications include: step-down switching regulators, step-up switching regulators, continuous voltage supplies, high voltage line filtering, and surge suppression

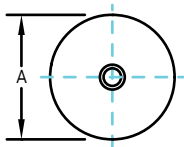
Verify operation with sample in actual circuit. Order samples at [www.rencousa.com](http://www.rencousa.com).

### MECHANICAL DIMENSIONS

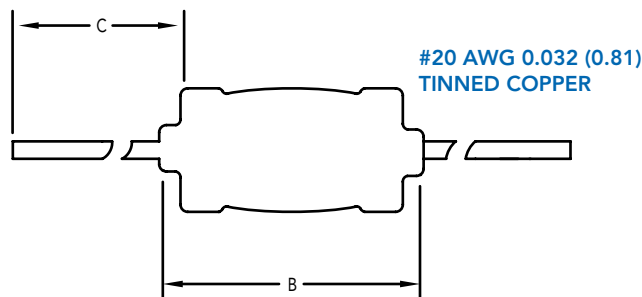
U.S. Standard (mm)

PART NUMBER	A (MAX.)	B (MAX.)	C (MIN.)	PART WEIGHT
RL-1293	0.45 (11.43)	0.90 (22.86)	1.00 (25.40)	7.0g (0.25oz)

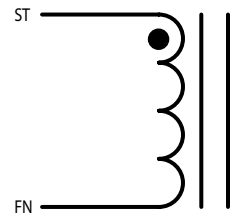
FRONT VIEW



SIDE VIEW



SCHEMATIC



# RL-1293

Renco Part No. RL-1293	Inductance ( $\mu$ H)	DCR Max. (Ohms)	Isat (A)	Irms (A)
RL-1293-3.9	3.90	0.007	8.20	4.00
RL-1293-4.7	4.70	0.008	7.70	4.00
RL-1293-5.6	5.60	0.011	6.90	4.00
RL-1293-6.8	6.80	0.011	6.30	4.00
RL-1293-8.2	8.20	0.013	5.70	4.00
RL-1293-10	10.0	0.017	5.20	4.00
RL-1293-12	12.0	0.019	4.70	4.00
RL-1293-15	15.0	0.022	4.50	4.00
RL-1293-18	18.0	0.023	3.90	4.00
RL-1293-22	22.0	0.026	3.50	4.00
RL-1293-27	27.0	0.027	2.90	4.00
RL-1293-33	33.0	0.032	2.90	4.00
RL-1293-39	39.0	0.033	2.70	4.00
RL-1293-47	47.0	0.035	2.50	4.00
RL-1293-56	56.0	0.037	2.30	3.20
RL-1293-68	68.0	0.047	2.10	2.50
RL-1293-82	82.0	0.060	1.90	2.00
RL-1293-100	100.0	0.090	1.70	1.60
RL-1293-120	120.0	0.113	1.60	1.60
RL-1293-150	150.0	0.129	1.40	1.60
RL-1293-180	180.0	0.150	1.30	1.60
RL-1293-220	220.0	0.162	1.20	1.60
RL-1293-270	270.0	0.208	1.10	1.60
RL-1293-330	330.0	0.212	0.95	1.60
RL-1293-390	390.0	0.281	0.88	1.60
RL-1293-470	470.0	0.380	0.80	1.20
RL-1293-560	560.0	0.420	0.74	1.00
RL-1293-680	680.0	0.548	0.67	1.00
RL-1293-820	820.0	0.655	0.61	0.80
RL-1293-1000	1000.0	0.844	0.56	0.80
RL-1293-1200	1200.0	1.040	0.51	0.60

RL-1293 TABLE CONTINUES ON FOLLOWING PAGE

**NOTES:**

1. INDUCTANCE  $\pm$ 15% TESTED AT 1.0 kHz, 0.1 Vrms
2. Isat - DC CURRENT THAT WILL CAUSE INDUCTANCE TO DROP BY 5%
3. Irms - CURRENT THAT CAUSES THE TEMPERATURE TO RISE APPROX. 40°C ABOVE AMBIENT OF 25°C
4. ELECTRICAL SPECIFICATIONS MEASURED AT 25°C
5. SUGGESTED MAXIMUM VOLTAGE 100V
6. PART FINISHED WITH 135°C POLYOLEFIN SLEEVING THAT MEETS UL-224 VW-1
7. DISTINCTIVE BLUE SLEEVING
8. AVAILABLE TAPE AND REEL FOR AUTO-INSERTION



**RENCO ELECTRONICS INC.**

595 International Place, Rockledge, FL 32955-4200 USA • www.rencousa.com • ISO 9001 Certified  
Toll Free Engineering Hot Line: 800.645.5828 • P: 321.637.1000 • F: 321.637.1600



# RL-1293

Renco Part No. RL-1293	Inductance ( $\mu$ H)	DCR Max. (Ohms)	Isat (A)	Irms (A)
RL-1293-1500	1500.0	1.18	0.46	0.600
RL-1293-1800	1800.0	1.56	0.42	0.600
RL-1293-2200	2200.0	2.00	0.38	0.500
RL-1293-2700	2700.0	2.06	0.34	0.400
RL-1293-3300	3300.0	2.53	0.31	0.400
RL-1293-3900	3900.0	2.75	0.29	0.400
RL-1293-4700	4700.0	3.19	0.26	0.400
RL-1293-5600	5600.0	3.92	0.24	0.315
RL-1293-6800	6800.0	5.69	0.22	0.250
RL-1293-8200	8200.0	6.32	0.20	0.250
RL-1293-10000	10000.0	7.30	0.18	0.250
RL-1293-12000	12000.0	9.21	0.17	0.200
RL-1293-15000	15000	10.5	0.15	0.200
RL-1293-18000	18000	14.8	0.14	0.158
RL-1293-22000	22000	21.8	0.12	0.125
RL-1293-27000	27000	22.7	0.11	0.125
RL-1293-33000	33000	25.7	0.10	0.125
RL-1293-39000	39000	31.8	0.09	0.100
RL-1293-47000	47000	36.1	0.08	0.100
RL-1293-56000	56000	40.9	0.08	0.100
RL-1293-68000	68000	57.3	0.07	0.082
RL-1293-82000	82000	79.3	0.07	0.065
RL-1293-100000	100000	89.7	0.06	0.065

**NOTES:**

1. INDUCTANCE  $\pm$ 15% TESTED AT 1.0 kHz, 0.1 Vrms
2. Isat - DC CURRENT THAT WILL CAUSE INDUCTANCE TO DROP BY 5%
3. Irms - CURRENT THAT CAUSES THE TEMPERATURE TO RISE APPROX. 40°C ABOVE AMBIENT OF 25°C
4. ELECTRICAL SPECIFICATIONS MEASURED AT 25°C
5. SUGGESTED MAXIMUM VOLTAGE 100V
6. PART FINISHED WITH 135°C POLYOLEFIN SLEEVING THAT MEETS UL-224 VW-1
7. DISTINCTIVE BLUE SLEEVING
8. AVAILABLE TAPE AND REEL FOR AUTO-INSERTION



**RENCO ELECTRONICS INC.**

595 International Place, Rockledge, FL 32955-4200 USA • [www.rencousa.com](http://www.rencousa.com) • ISO 9001 Certified  
Toll Free Engineering Hot Line: 800.645.5828 • P: 321.637.1000 • F: 321.637.1600

