

# RL-1292

## AXIAL LEADED HIGH FREQUENCY INDUCTOR

### DESCRIPTION

- Axial Leaded Inductor

### ENVIRONMENTAL DATA

- Storage temperature range: -55°C to +130°C
- Operating temperature range: -40°C to +130°C

### PACKAGING INFORMATION

- Packaging information: pg. 493

### FEATURES & APPLICATIONS

- Engineered for low loss in high frequency switching applications
- 56 standard values ranging from 3.9μH to 150,000μH
- Irms currents to 6 A and saturations up to 16 A
- Typical applications include: step-down switching regulators, step-up switching regulators, continuous voltage supplies, high voltage line filtering, and surge suppression

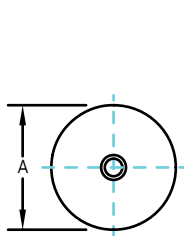
Verify operation with sample in actual circuit. Order samples at [www.rencousa.com](http://www.rencousa.com).

### MECHANICAL DIMENSIONS

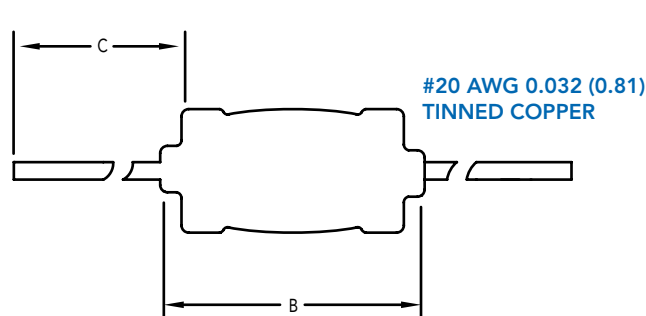
U.S. Standard (mm)

PART NUMBER	A (MAX.)	B (MAX.)	C (MIN.)	PART WEIGHT
RL-1292	0.55 (13.97)	1.00 (25.40)	1.00 (25.40)	12.0g (0.42oz)

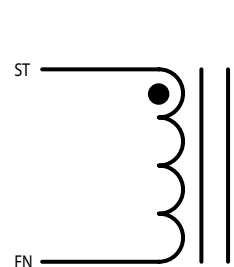
FRONT VIEW



SIDE VIEW



SCHEMATIC



**RENCO ELECTRONICS INC.**

595 International Place, Rockledge, FL 32955-4200 USA • [www.rencousa.com](http://www.rencousa.com) • ISO 9001 Certified  
Toll Free Engineering Hot Line: 800.645.5828 • P: 321.637.1000 • F: 321.637.1600



# RL-1292

Renco Part No. RL-1292	Inductance ( $\mu$ H)	DCR Max. (Ohms)	Isat (A)	Irms (A)
RL-1292-3.9	3.90	0.007	16.00	6.000
RL-1292-4.7	4.70	0.008	14.75	6.000
RL-1292-5.6	5.60	0.009	13.50	6.000
RL-1292-6.8	6.80	0.010	12.00	6.000
RL-1292-8.2	8.20	0.011	10.50	6.000
RL-1292.10	10.0	0.012	9.60	6.000
RL-1292-12	12.0	0.013	8.60	6.000
RL-1292-15	15.0	0.014	7.70	6.000
RL-1292-18	18.0	0.015	7.20	6.000
RL-1292-22	22.0	0.016	6.40	6.000
RL-1292-27	27.0	0.017	5.80	6.000
RL-1292-33	33.0	0.021	5.30	6.000
RL-1292-39	39.0	0.023	5.20	6.000
RL-1292-47	47.0	0.025	4.40	6.000
RL-1292-56	56.0	0.028	4.10	6.000
RL-1292-68	68.0	0.039	3.80	4.700
RL-1292-82	82.0	0.043	3.40	4.700
RL-1292-100	100.0	0.055	3.00	3.800
RL-1292-120	120.0	0.076	2.80	3.000
RL-1292-150	150.0	0.084	2.50	3.000
RL-1292-180	180.0	0.096	2.30	3.000
RL-1292-220	220.0	0.108	2.10	3.000
RL-1292-270	270.0	0.151	1.90	2.300
RL-1292-330	330.0	0.168	1.70	2.300
RL-1292-390	390.0	0.182	1.40	2.300
RL-1292-470	470.0	0.202	1.20	2.300
RL-1292-560	560.0	0.348	1.15	1.400
RL-1292-680	680.0	0.470	1.10	1.200
RL-1292-820	820.0	0.500	1.00	1.200

RL-1292 TABLE CONTINUES ON FOLLOWING PAGE

**NOTES:**

1. INDUCTANCE  $\pm 15\%$  TESTED AT 1.0 kHz, 0.1 Vrms
2. Isat - DC CURRENT THAT WILL CAUSE INDUCTANCE TO DROP BY 5%
3. I rms - CURRENT THAT CAUSES THE TEMPERATURE TO RISE APPROX. 40°C ABOVE AMBIENT OF 25°C
4. ELECTRICAL SPECIFICATIONS MEASURED AT 25°C
5. SUGGESTED MAXIMUM VOLTAGE 100V
6. PART FINISHED WITH 135°C POLYOLEFIN SLEEVING THAT MEETS UL-224 VW-1
7. DISTINCTIVE BLUE SLEEVING
8. AVAILABLE TAPE AND REEL FOR AUTO-INSERTION



**RENCO ELECTRONICS INC.**

595 International Place, Rockledge, FL 32955-4200 USA • www.rencousa.com • ISO 9001 Certified  
Toll Free Engineering Hot Line: 800.645.5828 • P: 321.637.1000 • F: 321.637.1600



# RL-1292

Renco Part No. RL-1292	Inductance ( $\mu$ H)	DCR Max. (Ohms)	Isat (A)	Irms (A)
RL-1292-1000	1000.0	0.570	0.91	1.200
RL-1292-1200	1200.0	0.648	0.84	1.200
RL-1292-1500	1500.0	0.888	0.76	0.900
RL-1292-1800	1800.0	1.160	0.73	0.750
RL-1292-2200	2200.0	1.200	0.68	0.750
RL-1292-2700	2700.0	1.440	0.56	0.750
RL-1292-3300	3300.0	1.920	0.53	0.590
RL-1292-3900	3900.0	2.160	0.51	0.590
RL-1292-4700	4700.0	2.500	0.47	0.590
RL-1292-5600	5600.0	3.200	0.44	0.450
RL-1292-6800	6800.0	4.000	0.41	0.450
RL-1292-8200	8200.0	5.200	0.37	0.350
RL-1292-10000	10000.0	6.00	0.340	0.350
RL-1292-12000	12000.0	8.00	0.320	0.270
RL-1292-15000	15000.0	10.00	0.250	0.200
RL-1292-18000	18000.0	11.00	0.230	0.200
RL-1292-22000	22000.0	13.00	0.210	0.200
RL-1292-27000	27000.0	15.00	0.185	0.200
RL-1292-33000	33000.0	21.00	0.175	0.160
RL-1292-39000	39000.0	23.20	0.160	0.160
RL-1292-47000	47000.0	32.00	0.148	0.120
RL-1292-56000	56000.0	35.00	0.135	0.120
RL-1292-68000	68000.0	48.00	0.125	0.095
RL-1292-82000	82000.0	54.30	0.110	0.095
RL-1292-100000	100000.0	68.50	0.095	0.070
RL-1292-120000	120000.0	75.00	0.080	0.070
RL-1292-150000	150000.0	84.30	0.060	0.070

## NOTES:

1. INDUCTANCE  $\pm$ 15% TESTED AT 1.0 kHz, 0.1 Vrms
2. Isat - DC CURRENT THAT WILL CAUSE INDUCTANCE TO DROP BY 5%
3. Irms - CURRENT THAT CAUSES THE TEMPERATURE TO RISE APPROX. 40°C ABOVE AMBIENT OF 25°C
4. ELECTRICAL SPECIFICATIONS MEASURED AT 25°C
5. SUGGESTED MAXIMUM VOLTAGE 100V
6. PART FINISHED WITH 135°C POLYOLEFIN SLEEVING THAT MEETS UL-224 VW-1
7. DISTINCTIVE BLUE SLEEVING
8. AVAILABLE TAPE AND REEL FOR AUTO-INSERTION



**RENCO ELECTRONICS INC.**

595 International Place, Rockledge, FL 32955-4200 USA • [www.rencousa.com](http://www.rencousa.com) • ISO 9001 Certified  
Toll Free Engineering Hot Line: 800.645.5828 • P: 321.637.1000 • F: 321.637.1600

