

RL-1288

POWER LINE CHOKES

DESCRIPTION

- Power Line Chokes

ENVIRONMENTAL DATA

- Storage temperature range: -55°C to +130°C
- Operating temperature range: -40°C to +130°C

PACKAGING INFORMATION

- Packaging information: pgs. 489, 493

FEATURES & APPLICATIONS

- 49 standard values to choose from
- Inductances range from 1.0 μ H to 10,000 μ H
- Use of high saturation material makes these coils ideal for use in switching regulated power supply type applications
- Size of the coils make them easy to incorporate in equipment
- Switching regulators
- Typical applications include: power amplifiers, power supplies, SCR and TRIAC controls, speaker crossover networks, and filters

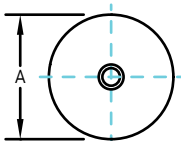
Verify operation with sample in actual circuit. Order samples at www.rencousa.com.

MECHANICAL DIMENSIONS

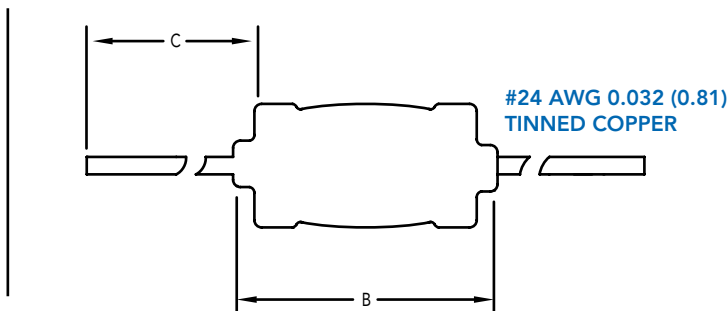
U.S. Standard (mm)

PART NUMBER	A (MAX.)	B (MAX.)	C (MIN.)	PART WEIGHT
RL-1288	0.16 (4.06)	0.43 (10.80)	1.00 (25.40)	0.50g (0.018oz)

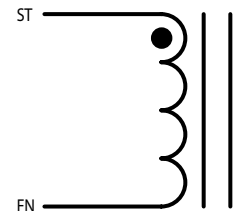
FRONT VIEW



SIDE VIEW



SCHEMATIC



RESCO ELECTRONICS INC.

595 International Place, Rockledge, FL 32955-4200 USA • www.rencousa.com • ISO 9001 Certified
Toll Free Engineering Hot Line: 800.645.5828 • P: 321.637.1000 • F: 321.637.1600



RL-1288

Renco Part No. RL-1288	Inductance (μ H)	DCR Max. (Ohms)	Isat (mA)	Irms (mA)
RL-1288-1.0	1.00	0.018	3000.0	3300.0
RL-1288-1.2	1.20	0.019	2700.0	3200.0
RL-1288-1.5	1.50	0.020	2500.0	3100.0
RL-1288-1.8	1.80	0.023	2100.0	2900.0
RL-1288-2.2	2.20	0.031	2000.0	2600.0
RL-1288-2.7	2.70	0.033	1900.0	2500.0
RL-1288-3.3	3.30	0.054	1700.0	1900.0
RL-1288-3.9	3.90	0.060	1500.0	1800.0
RL-1288-4.7	4.70	0.068	1400.0	1700.0
RL-1288-5.6	5.60	0.074	1300.0	1600.0
RL-1288-6.8	6.80	0.080	1200.0	1600.0
RL-1288-8.2	8.20	0.087	1100.0	1500.0
RL-1288-10	10.0	0.095	970.0	1500.0
RL-1288-12	12.0	0.110	880.0	1400.0
RL-1288-15	15.0	0.121	790.0	1200.0
RL-1288-18	18.0	0.160	710.0	1100.0
RL-1288-22	22.0	0.190	640.0	1000.0
RL-1288-27	27.0	0.220	580.0	950.0
RL-1288-33	33.0	0.260	530.0	910.0
RL-1288-39	39.0	0.350	480.0	880.0
RL-1288-47	47.0	0.430	430.0	760.0
RL-1288-56	56.0	0.470	400.0	650.0
RL-1288-68	68.0	0.530	370.0	610.0
RL-1288-82	82.0	0.600	330.0	580.0
RL-1288-100	100.0	0.670	300.0	550.0
RL-1288-120	120.0	0.900	270.0	470.0
RL-1288-150	150.0	1.200	250.0	410.0
RL-1288-180	180.0	1.400	220.0	380.0
RL-1288-220	220.0	1.900	200.0	320.0
RL-1288-270	270.0	2.100	180.0	310.0

RL-1288 TABLE CONTINUES ON FOLLOWING PAGE

NOTES:

1. INDUCTANCE \pm 15% TESTED AT 1.0 kHz, 0.1 Vrms
2. 10% AND 5% TOLERANCES OPTIONAL
3. Isat - DC CURRENT THAT WILL CAUSE INDUCTANCE TO DROP BY 5%
4. Irms - CURRENT THAT CAUSES THE TEMPERATURE TO RISE APPROX. 40°C ABOVE AMBIENT OF 25°C
5. ELECTRICAL SPECIFICATIONS MEASURED AT 25°C
6. FOR APPLICATIONS OVER 24 VOLTS VERIFY OPERATION WITH SAMPLE IN ACTUAL CIRCUIT
7. PART FINISHED WITH 135°C POLYOLEFIN SLEEVING THAT MEETS UL-224 VW-1



RENCO ELECTRONICS INC.

595 International Place, Rockledge, FL 32955-4200 USA • www.rencousa.com • ISO 9001 Certified
Toll Free Engineering Hot Line: 800.645.5828 • P: 321.637.1000 • F: 321.637.1600



RL-1288

Renco Part No. RL-1288	Inductance (μ H)	DCR Max. (Ohms)	Isat (mA)	Irms (mA)
RL-1288-330	330.0	2.40	170.0	290.0
RL-1288-390	390.0	3.00	150.0	260.0
RL-1288-470	470.0	3.80	140.0	240.0
RL-1288-560	560.0	4.70	130.0	210.0
RL-1288-680	680.0	6.40	110.0	180.0
RL-1288-820	820.0	7.10	100.0	170.0
RL-1288-1000	1000.0	7.90	95.0	160.0
RL-1288-1200	1200.0	9.00	87.0	150.0
RL-1288-1500	1500.0	12.00	78.0	130.0
RL-1288-1800	1800.0	14.00	71.0	120.0
RL-1288-2200	2200.0	19.00	64.0	100.0
RL-1288-2700	2700.0	25.00	58.0	90.0
RL-1288-3300	3300.0	29.00	52.0	83.0
RL-1288-3900	3900.0	34.00	48.0	77.0
RL-1288-4700	4700.0	42.55	44.0	74.0
RL-1288-5600	5600.0	50.00	40.0	63.0
RL-1288-6800	6800.0	58.00	36.0	59.0
RL-1288-8200	8200.0	68.00	33.0	54.0
RL-1288-10000	10000.0	75.00	30.0	52.0

NOTES:

1. INDUCTANCE \pm 15% TESTED AT 1.0 kHz, 0.1 Vrms
2. 10% AND 5% TOLERANCES OPTIONAL
3. Isat - DC CURRENT THAT WILL CAUSE INDUCTANCE TO DROP BY 5%
4. Irms - CURRENT THAT CAUSES THE TEMPERATURE TO RISE APPROX. 40°C ABOVE AMBIENT OF 25°C
5. ELECTRICAL SPECIFICATIONS MEASURED AT 25°C
6. FOR APPLICATIONS OVER 24 VOLTS VERIFY OPERATION WITH SAMPLE IN ACTUAL CIRCUIT
7. PART FINISHED WITH 135°C POLYOLEFIN SLEEVING THAT MEETS UL-224 VW-1



RENCO ELECTRONICS INC.

595 International Place, Rockledge, FL 32955-4200 USA • www.rencousa.com • ISO 9001 Certified
Toll Free Engineering Hot Line: 800.645.5828 • P: 321.637.1000 • F: 321.637.1600

