

RL-1284

POWER LINE CHOKES

DESCRIPTION

- Power Line Chokes

ENVIRONMENTAL DATA

- Storage temperature range: -55°C to +130°C
- Operating temperature range: -40°C to +130°C

PACKAGING INFORMATION

- Packaging information: pgs. 489, 493

FEATURES & APPLICATIONS

- 45 standard values to choose from
- Inductances range from 3.9μH to 18,000μH
- Use of high saturation material makes these coils ideal for use in switching regulated power supply type applications
- Size of the coils make them easy to incorporate in equipment
- Switching regulators
- Typical applications include: power amplifiers, power supplies, SCR and TRIAC controls, speaker crossover networks, and filters

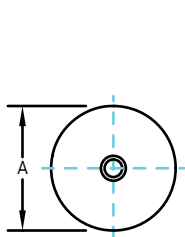
Verify operation with sample in actual circuit. Order samples at www.rencousa.com.

MECHANICAL DIMENSIONS

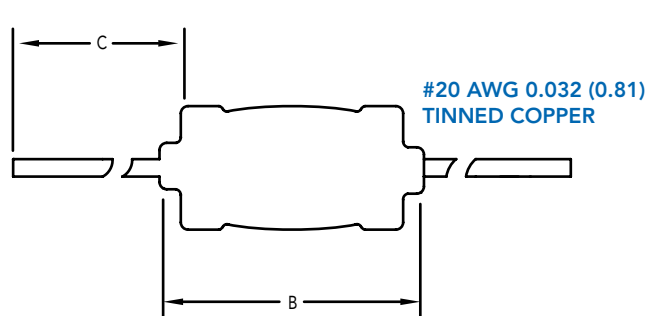
U.S. Standard (mm)

PART NUMBER	A (MAX.)	B (MAX.)	C (MIN.)	PART WEIGHT
RL-1284	0.26 (6.60)	0.70 (17.78)	1.00 (25.40)	1.5g (0.05oz)

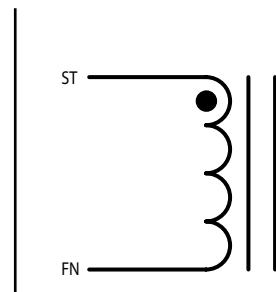
FRONT VIEW



SIDE VIEW



SCHEMATIC



RENCO ELECTRONICS INC.

595 International Place, Rockledge, FL 32955-4200 USA • www.rencousa.com • ISO 9001 Certified
Toll Free Engineering Hot Line: 800.645.5828 • P: 321.637.1000 • F: 321.637.1600



RL-1284

Renco Part No. RL-1284	Inductance (μ H)	DCR Max. (Ohms)	Isat (A)	Irms (A)
RL-1284-3.9	3.90	0.019	7.30	1.280
RL-1284-4.7	4.70	0.022	6.30	1.280
RL-1284-5.6	5.60	0.024	5.60	1.280
RL-1284-6.8	6.80	0.026	5.30	1.280
RL-1284-8.2	8.20	0.028	4.50	1.280
RL-1284-10	10.0	0.033	4.10	1.280
RL-1284-12	12.0	0.037	3.60	1.280
RL-1284-15	15.0	0.040	3.30	1.280
RL-1284-18	18.0	0.044	3.00	1.280
RL-1284-22	22.0	0.050	2.70	1.280
RL-1284-27	27.0	0.058	2.50	1.280
RL-1284-33	33.0	0.075	2.20	1.008
RL-1284-39	39.0	0.094	2.00	0.804
RL-1284-47	47.0	0.109	1.80	0.804
RL-1284-56	56.0	0.140	1.70	0.804
RL-1284-68	68.0	0.145	1.50	0.804
RL-1284-82	82.0	0.152	1.40	0.804
RL-1284-100	100.0	0.218	1.20	0.632
RL-1284-120	120.0	0.283	1.10	0.508
RL-1284-150	150.0	0.340	1.00	0.508
RL-1284-180	180.0	0.362	0.95	0.508
RL-1284-220	220.0	0.430	0.86	0.508
RL-1284-270	270.0	0.557	0.77	0.400
RL-1284-330	330.0	0.665	0.70	0.400
RL-1384-390	390.0	0.772	0.64	0.400
RL-1384-470	470.0	1.150	0.59	0.315
RL-1284-560	560.0	1.270	0.54	0.315
RL-1284-680	680.0	1.610	0.49	0.250
RL-1284-820	820.0	1.960	0.44	0.200
RL-1284-1000	1000.0	2.300	0.40	0.200
RL-1284-1200	1200.0	2.650	0.35	0.200
RL-1284-1500	1500.0	3.450	0.33	0.158
RL-1284-1800	1800.0	4.030	0.29	0.158
RL-1284-2200	2200.0	4.480	0.27	0.158

RL-1284 TABLE CONTINUES ON FOLLOWING PAGE

NOTES:

1. INDUCTANCE \pm 15% TESTED AT 1.0 kHz, 0.1 Vrms
2. 10% AND 5% TOLERANCES OPTIONAL
3. ELECTRICAL SPECIFICATIONS MEASURED AT 25°C
4. Isat - DC CURRENT THAT WILL CAUSE INDUCTANCE TO DROP BY 5%
5. Irms - CURRENT THAT CAUSES THE TEMPERATURE TO RISE APPROX. 40°C ABOVE AMBIENT OF 25°C
6. PART FINISHED WITH 135°C POLYOLEFIN SLEEVING THAT MEETS UL-224 VW-1
7. FOR APPLICATIONS OVER 24 VOLTS VERIFY OPERATION WITH SAMPLE IN ACTUAL CIRCUIT



RENCO ELECTRONICS INC.

595 International Place, Rockledge, FL 32955-4200 USA • www.rencousa.com • ISO 9001 Certified
Toll Free Engineering Hot Line: 800.645.5828 • P: 321.637.1000 • F: 321.637.1600



RL-1284

Renco Part No. RL-1284	Inductance (μ H)	DCR Max. (Ohms)	Isat (A)	Irms (A)
RL-1284-2700	2700.0	5.90	0.240	0.125
RL-1284-3300	3300.0	6.56	0.220	0.125
RL-1284-3900	3900.0	8.63	0.200	0.100
RL-1284-4700	4700.0	10.50	0.180	0.100
RL-1284-5600	5600.0	13.90	0.166	0.082
RL-1284-6800	6800.0	16.30	0.151	0.082
RL-1284-8200	8200.0	20.80	0.136	0.065
RL-1284-10000	10000.0	26.40	0.125	0.050
RL-1284-12000	12000.0	29.90	0.114	0.050
RL-1284-15000	15000.0	42.50	0.098	0.039
RL-1284-18000	18000.0	48.30	0.091	0.039

NOTES:

1. INDUCTANCE \pm 15% TESTED AT 1.0 kHz, 0.1 Vrms
2. 10% AND 5% TOLERANCES OPTIONAL
3. ELECTRICAL SPECIFICATIONS MEASURED AT 25°C
4. Isat - DC CURRENT THAT WILL CAUSE INDUCTANCE TO DROP BY 5%
5. Irms - CURRENT THAT CAUSES THE TEMPERATURE TO RISE APPROX. 40°C ABOVE AMBIENT OF 25°C
6. PART FINISHED WITH 135°C POLYOLEFIN SLEEVING THAT MEETS UL-224 VW-1
7. FOR APPLICATIONS OVER 24 VOLTS VERIFY OPERATION WITH SAMPLE IN ACTUAL CIRCUIT



RENCO ELECTRONICS INC.

595 International Place, Rockledge, FL 32955-4200 USA • www.rencousa.com • ISO 9001 Certified
Toll Free Engineering Hot Line: 800.645.5828 • P: 321.637.1000 • F: 321.637.1600

