

RL-1283

POWER LINE CHOKES

DESCRIPTION

- Power Line Chokes

ENVIRONMENTAL DATA

- Storage temperature range: -55°C to +130°C
- Operating temperature range: -40°C to +130°C

PACKAGING INFORMATION

- Packaging information: pgs. 489, 493

FEATURES & APPLICATIONS

- 54 standard values to choose from
- Inductances range from 3.9 μ H to 100,000 μ H
- Use of high saturation material makes these coils ideal for use in switching regulated power supply type applications
- Size of the coils make them easy to incorporate in equipment
- Switching regulators
- Typical applications include: power amplifiers, power supplies, SCR and TRIAC controls, speaker crossover networks, and filters

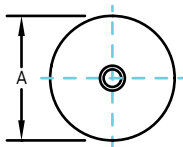
Verify operation with sample in actual circuit. Order samples at www.rencousa.com.

MECHANICAL DIMENSIONS

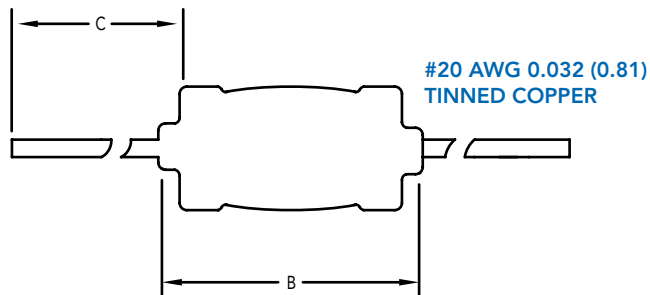
U.S. Standard (mm)

PART NUMBER	A (MAX.)	B (MAX.)	C (MIN.)	PART WEIGHT
RL-1283	0.453 (11.506)	0.900 (22.860)	1.000 (25.400)	7.0g (0.28oz)

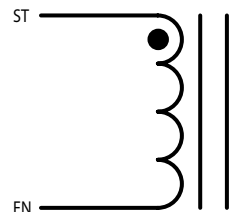
FRONT VIEW



SIDE VIEW



SCHEMATIC



RECO ELECTRONICS INC.

595 International Place, Rockledge, FL 32955-4200 USA • www.rencousa.com • ISO 9001 Certified
Toll Free Engineering Hot Line: 800.645.5828 • P: 321.637.1000 • F: 321.637.1600



RL-1283

Renco Part No. RL-1283	Inductance (μ H)	DCR Max. (Ohms)	Isat (A)	Irms (A)
RL-1283-3.9	3.90	0.007	15.5	4.0
RL-1283-4.7	4.70	0.008	13.9	4.0
RL-1283-5.6	5.60	0.011	12.6	4.0
RL-1283-6.8	6.80	0.011	11.6	4.0
RL-1283-8.2	8.20	0.013	9.89	4.0
RL-1283-10	10.0	0.017	8.70	4.0
RL-1283-12	12.0	0.019	8.21	4.0
RL-1283-15	15.0	0.022	7.34	4.0
RL-1283-18	18.0	0.023	6.64	4.0
RL-1283-22	22.0	0.026	6.07	4.0
RL-1283-27	27.0	0.027	5.36	4.0
RL-1283-33	33.0	0.032	4.82	4.0
RL-1283-39	39.0	0.033	4.36	4.0
RL-1283-47	47.0	0.035	3.98	4.0
RL-1283-56	56.0	0.037	3.66	3.2
RL-1283-68	68.0	0.047	3.31	2.5
RL-1283-82	82.0	0.060	3.10	2.0
RL-1283-100	100.0	0.090	2.79	1.6
RL-1283-120	120.0	0.113	2.54	1.6
RL-1283-150	150.0	0.129	2.22	1.6
RL-1283-180	180.0	0.150	1.98	1.6
RL-1283-220	220.0	0.162	1.89	1.6
RL-1283-270	270.0	0.208	1.63	1.6
RL-1283-330	330.0	0.212	1.51	1.6
RL-1283-390	390.0	0.281	1.39	1.6
RL-1283-470	470.0	0.380	1.24	1.2
RL-1283-560	560.0	0.420	1.17	1.0
RL-1283-680	680.0	0.548	1.05	1.0
RL-1283-820	820.0	0.655	0.97	0.8
RL-1283-1000	1000.0	0.844	0.87	0.8
RL-1283-1200	1200.0	1.040	0.79	0.6
RL-1283-1500	1500.0	1.180	0.70	0.6
RL-1283-1800	1800.0	1.560	0.64	0.6
RL-1283-2200	2200.0	2.000	0.58	0.5

RL-1283 TABLE CONTINUES ON FOLLOWING PAGE

NOTES:

1. INDUCTANCE \pm 15% TESTED AT 1.0 kHz, 0.1 Vrms
2. 10% AND 5% TOLERANCES OPTIONAL
3. Isat - DC CURRENT THAT WILL CAUSE INDUCTANCE TO DROP BY 5%
4. Irms - CURRENT THAT CAUSES THE TEMPERATURE TO RISE APPROX. 40°C ABOVE AMBIENT OF 25°C
5. PART FINISHED WITH 135°C POLYOLEFIN SLEEVING THAT MEETS UL-224 VW-1
6. FOR APPLICATIONS OVER 24 VOLTS VERIFY OPERATION WITH SAMPLE IN ACTUAL CIRCUIT
7. ELECTRICAL SPECIFICATIONS MEASURED AT 25°C



RENCO ELECTRONICS INC.

595 International Place, Rockledge, FL 32955-4200 USA • www.rencousa.com • ISO 9001 Certified
Toll Free Engineering Hot Line: 800.645.5828 • P: 321.637.1000 • F: 321.637.1600



RL-1283

Renco Part No. RL-1283	Inductance (μ H)	DCR Max. (Ohms)	Isat (A)	Irms (A)
RL-1283-2700	2700.0	2.06	0.530	0.400
RL-1283-3300	3300.0	2.53	0.470	0.400
RL-1283-3900	3900.0	2.75	0.430	0.400
RL-1283-4700	4700.0	3.19	0.390	0.400
RL-1283-5600	5600.0	5.92	0.359	0.315
RL-1283-6800	6800.0	5.69	0.322	0.250
RL-1283-8200	8200.0	6.32	0.293	0.250
RL-1283-10000	10000.0	7.30	0.266	0.250
RL-1283-12000	12000.0	9.21	0.241	0.200
RL-1283-15000	15000.0	10.50	0.214	0.200
RL-1283-18000	18000.0	14.80	0.198	0.158
RL-1283-22000	22000.0	21.80	0.180	0.125
RL-1283-27000	27000.0	22.70	0.162	0.125
RL-1283-33000	33000.0	25.70	0.146	0.125
RL-1283-39000	39000.0	31.80	0.135	0.100
RL-1283-47000	47000.0	36.10	0.122	0.100
RL-1283-56000	56000.0	40.90	0.112	0.100
RL-1283-68000	68000.0	57.30	0.101	0.082
RL-1283-82000	82000.0	79.30	0.090	0.065
RL-1283-100000	100000.0	89.70	0.081	0.065

NOTES:

1. INDUCTANCE \pm 15% TESTED AT 1.0 kHz, 0.1 Vrms
2. 10% AND 5% TOLERANCES OPTIONAL
3. Isat - DC CURRENT THAT WILL CAUSE INDUCTANCE TO DROP BY 5%
4. Irms - CURRENT THAT CAUSES THE TEMPERATURE TO RISE APPROX. 40°C ABOVE AMBIENT OF 25°C
5. PART FINISHED WITH 135°C POLYOLEFIN SLEEVING THAT MEETS UL-224 VW-1
6. FOR APPLICATIONS OVER 24 VOLTS VERIFY OPERATION WITH SAMPLE IN ACTUAL CIRCUIT
7. ELECTRICAL SPECIFICATIONS MEASURED AT 25°C



RENCO ELECTRONICS INC.

595 International Place, Rockledge, FL 32955-4200 USA • www.rencousa.com • ISO 9001 Certified
Toll Free Engineering Hot Line: 800.645.5828 • P: 321.637.1000 • F: 321.637.1600

