



# RL-1282

## POWER LINE CHOKES

### DESCRIPTION

- Power Line Chokes

### ENVIRONMENTAL DATA

- Storage temperature range: -55°C to +130°C
- Operating temperature range: -40°C to +130°C

### PACKAGING INFORMATION

- Packaging information: pg. 493

### FEATURES & APPLICATIONS

- 56 standard values to choose from
- Inductances range from 3.9μH to 150,000μH
- Use of high saturation material makes these coils ideal for use in switching regulated power supply type applications
- Size of the coils make them easy to incorporate in equipment
- Typical applications include: power amplifiers, power supplies, SCR and TRIAC controls, speaker crossover networks, and filters

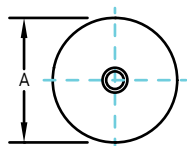
Verify operation with sample in actual circuit. Order samples at [www.rencousa.com](http://www.rencousa.com).

### MECHANICAL DIMENSIONS

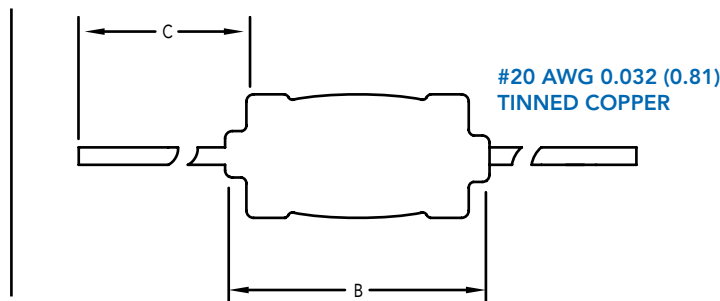
U.S. Standard (mm)

PART NUMBER	A (MAX.)	B (MAX.)	C (MIN.)	PART WEIGHT
RL-1282	0.550 (13.970)	1.000 (25.400)	1.000 (25.400)	12.0g (0.42oz)

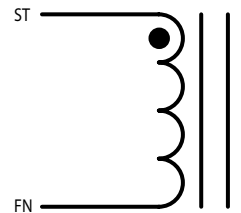
FRONT VIEW



SIDE VIEW



SCHEMATIC



**RENCO ELECTRONICS INC.**

595 International Place, Rockledge, FL 32955-4200 USA • [www.rencousa.com](http://www.rencousa.com) • ISO 9001 Certified  
Toll Free Engineering Hot Line: 800.645.5828 • P: 321.637.1000 • F: 321.637.1600



# RL-1282

Renco Part No. RL-1282	Inductance ( $\mu$ H)	DCR Max. (Ohms)	Isat (A)	Irms (A)
RL-1282-3.9	3.9	0.007	47.000	6.000
RL-1282-4.7	4.7	0.008	42.000	6.000
RL-1282-5.6	5.6	0.009	35.000	6.000
RL-1282-6.8	6.8	0.010	29.000	6.000
RL-1282-8.2	8.2	0.011	24.000	6.000
RL-1282-10	10.0	0.012	19.000	6.000
RL-1282-12	12.0	0.013	16.000	6.000
RL-1282-15	15.0	0.014	14.800	6.000
RL-1281-18	18.0	0.015	13.400	6.000
RL-1282-22	22.0	0.016	12.400	6.000
RL-1282-27	27.0	0.017	11.200	6.000
RL-1282-33	33.0	0.021	10.200	6.000
RL-1282-39	39.0	0.023	9.300	6.000
RL-1282-47	47.0	0.025	8.700	6.000
RL-1282-56	56.0	0.028	8.000	6.000
RL-1282-68	68.0	0.039	7.000	4.700
RL-1282-82	82.0	0.043	6.300	4.700
RL-1282-100	100.0	0.055	5.700	3.800
RL-1282-120	120.0	0.076	5.300	3.000
RL-1282-150	150.0	0.084	4.700	3.000
RL-1282-180	180.0	0.096	4.300	3.000
RL-1282-220	220.0	0.108	4.000	3.000
RL-1282-270	270.0	0.151	3.600	2.300
RL-1282-330	330.0	0.168	3.200	2.300
RL-1282-390	390.0	0.182	2.900	2.300
RL-1282-470	470.0	0.202	2.600	2.300
RL-1282-560	560.0	0.348	2.400	1.400
RL-1282-680	680.0	0.470	2.200	1.200
RL-1282-820	820.0	0.500	2.000	1.200

RL-1282 TABLE CONTINUES ON FOLLOWING PAGE

**NOTES:**

1. INDUCTANCE  $\pm$  15% TESTED AT 1.0 kHz, 0.1 Vrms
2. 10% AND 5% TOLERANCES OPTIONAL
3. ELECTRICAL SPECIFICATIONS MEASURED AT 25°C
4. Isat - DC CURRENT THAT WILL CAUSE INDUCTANCE TO DROP BY 5%
5. Irms - CURRENT THAT CAUSES THE TEMPERATURE TO RISE APPROX. 40°C ABOVE AMBIENT OF 25°C
6. PART FINISHED WITH 135°C POLYOLEFIN SLEEVING THAT MEETS UL-224 VW-1
7. FOR APPLICATIONS OVER 24 VOLTS VERIFY OPERATION WITH SAMPLE IN ACTUAL CIRCUIT



**RENCO ELECTRONICS INC.**

595 International Place, Rockledge, FL 32955-4200 USA • [www.rencousa.com](http://www.rencousa.com) • ISO 9001 Certified  
Toll Free Engineering Hot Line: 800.645.5828 • P: 321.637.1000 • F: 321.637.1600



# RL-1282

Renco Part No. RL-1282	Inductance ( $\mu$ H)	DCR Max. (Ohms)	Isat (A)	Irms (A)
RL-1282-1000	1000.0	0.570	1.800	1.200
RL-1282-1200	1200.0	0.648	1.700	1.200
RL-1282-1500	1500.0	0.888	1.550	0.900
RL-1282-1800	1800.0	1.160	1.400	0.750
RL-1282-2200	2200.0	1.200	1.250	0.750
RL-1282-2700	2700.0	1.440	1.100	0.750
RL-1282-3300	3300.0	1.920	1.000	0.590
RL-1282-3900	3900.0	2.160	0.900	0.590
RL-1282-4700	4700.0	2.500	0.850	0.590
RL-1282-5600	5600.0	3.200	0.780	0.450
RL-1282-6800	6800.0	4.000	0.700	0.450
RL-1282-8200	8200.0	5.200	0.650	0.350
RL-1282-10000	10000.0	6.00	0.600	0.350
RL-1282-12000	12000.0	8.00	0.540	0.270
RL-1282-15000	15000.0	10.00	0.480	0.200
RL-1282-18000	18000.0	11.00	0.460	0.200
RL-1282-22000	22000.0	13.00	0.390	0.200
RL-1282-27000	27000.0	15.00	0.355	0.200
RL-1282-33000	33000.0	21.00	0.330	0.160
RL-1282-39000	39000.0	23.20	0.300	0.160
RL-1282-47000	47000.0	32.00	0.270	0.120
RL-1282-56000	56000.0	35.00	0.175	0.120
RL-1282-68000	68000.0	48.00	0.145	0.095
RL-1282-82000	82000.0	54.30	0.120	0.095
RL-1282-100000	100000.0	68.50	0.100	0.070
RL-1282-120000	120000.0	75.00	0.080	0.070
RL-1282-150000	150000.0	84.30	0.060	0.070

## NOTES:

1. INDUCTANCE  $\pm$  15% TESTED AT 1.0 kHz, 0.1 Vrms
2. 10% AND 5% TOLERANCES OPTIONAL
3. ELECTRICAL SPECIFICATIONS MEASURED AT 25°C
4. Isat - DC CURRENT THAT WILL CAUSE INDUCTANCE TO DROP BY 5%
5. Irms - CURRENT THAT CAUSES THE TEMPERATURE TO RISE APPROX. 40°C ABOVE AMBIENT OF 25°C
6. PART FINISHED WITH 135°C POLYOLEFIN SLEEVING THAT MEETS UL-224 VW-1
7. FOR APPLICATIONS OVER 24 VOLTS VERIFY OPERATION WITH SAMPLE IN ACTUAL CIRCUIT



**RENCO ELECTRONICS INC.**

595 International Place, Rockledge, FL 32955-4200 USA • [www.rencousa.com](http://www.rencousa.com) • ISO 9001 Certified  
Toll Free Engineering Hot Line: 800.645.5828 • P: 321.637.1000 • F: 321.637.1600

