

**CAUTION:**  
 NOT RECOMMENDED  
 FOR DC APPLICATIONS  
 (DC SATURATION  
 CURRENTS VERY LOW)

# RL-1124

## SHIELDED INDUCTORS FERRITE COILFORM & SHELL

### DESCRIPTION

- Shielded Inductors
- Ferrite Coilform & Shell

### ENVIRONMENTAL DATA

- Storage temperature range:  
-55°C to +130°C
- Operating temperature range:  
-40°C to +130°C

### PACKAGING INFORMATION

- Packaging information: pgs. 489, 493

### FEATURES & APPLICATIONS

- Come in wide inductance and current ranges
- Small size makes them extremely useful in compact audio filters, tone control circuits, amplifiers and wherever high inductance coils are needed
- Typical applications include: low level power supplies, filters, switching circuits and telecommunications

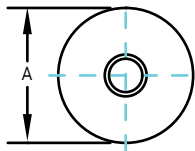
Verify operation with sample in actual circuit. Order samples at [www.rencousa.com](http://www.rencousa.com).

### MECHANICAL DIMENSIONS

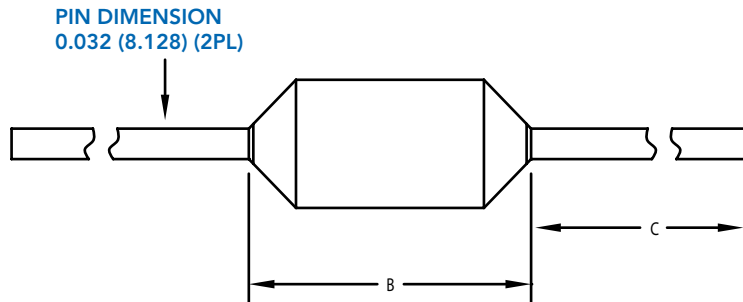
U.S. Standard (mm)

PART NUMBER	A (MAX.)	B (MAX.)	C (MIN.)	PART WEIGHT
RL-1124	0.325 (8.255)	0.725 (18.415)	1.00 (25.40)	2.0g (0.07oz)

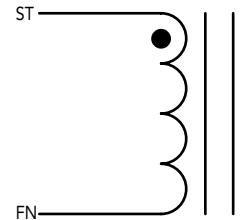
FRONT VIEW



SIDE VIEW



SCHEMATIC



# RL-1124

Renco Part No. RL-1124	Inductance	DCR ±20% (Ohms)	I <sub>rms</sub> (A)
RL-1124-.0010	1.0 µH	0.011	0.707
RL-1124-.0012	1.2 µH	0.012	0.707
RL-1124-.0015	1.5 µH	0.012	0.707
RL-1124-.0018	1.8 µH	0.012	0.707
RL-1124-.0022	2.2 µH	0.012	0.707
RL-1124-.0027	2.7 µH	0.013	0.707
RL-1124-.0033	3.3 µH	0.013	0.707
RL-1124-.0039	3.9 µH	0.014	0.707
RL-1124-.0047	4.7 µH	0.014	0.707
RL-1124-.0056	5.6 µH	0.017	0.707
RL-1124-.0068	6.8 µH	0.018	0.707
RL-1124-.0082	8.2 µH	0.018	0.707
RL-1124-.0100	10.0 µH	0.020	0.707
RL-1124-.0120	12.0 µH	0.022	0.707
RL-1124-.0150	15.0 µH	0.024	0.707
RL-1124-.0180	18.0 µH	0.030	0.707
RL-1124-.0220	22.0 µH	0.032	0.707
RL-1124-.0270	27.0 µH	0.034	0.707
RL-1124-.0330	33.0 µH	0.036	0.707
RL-1124-.0390	39.0 µH	0.038	0.707
RL-1124-.0470	47.0 µH	0.040	0.707
RL-1124-.0560	56.0 µH	0.046	0.707
RL-1124-.0680	68.0 µH	0.047	0.707
RL-1124-.0820	82.0 µH	0.050	0.707
RL-1124-.1000	100.0 µH	0.054	0.707
RL-1124-.1200	120.0 µH	0.059	0.707
RL-1124-.1500	150.0 µH	0.073	0.707
RL-1124-.1800	180.0 µH	0.078	0.707
RL-1124-.2200	220.0 µH	0.082	0.707
RL-1124-.2700	270.0 µH	0.098	0.707
RL-1124-.3300	330.0 µH	0.132	0.556
RL-1124-.3900	390.0 µH	0.142	0.556
RL-1124-.4700	470.0 µH	0.170	0.556
RL-1124-.5600	560.0 µH	0.222	0.437
RL-1124-.6800	680.0 µH	0.235	0.437
RL-1124-.8200	820.0 µH	0.260	0.437

Renco Part No. RL-1124	Inductance	DCR ±20% (Ohms)	I <sub>rms</sub> (A)
RL-1124-1.0	1.0 mH	0.440	0.350
RL-1124-1.2	1.2 mH	0.470	0.350
RL-1124-1.5	1.5 mH	0.640	0.277
RL-1124-1.8	1.8 mH	0.700	0.277
RL-1124-2.2	2.2 mH	0.925	0.224
RL-1124-2.7	2.7 mH	1.020	0.224
RL-1124-3.3	3.3 mH	1.160	0.224
RL-1124-3.9	3.9 mH	1.610	0.175
RL-1124-4.7	4.7 mH	1.690	0.175
RL-1124-5.6	5.6 mH	2.420	0.139
RL-1124-6.8	6.8 mH	2.570	0.139
RL-1124-8.2	8.2 mH	3.190	0.110
RL-1124-10	10.0 mH	4.160	0.110
RL-1124-12	12.0 mH	4.320	0.110
RL-1124-15	15.0 mH	4.960	0.110
RL-1124-18	18.0 mH	5.280	0.110
RL-1124-22	22.0 mH	9.060	0.080
RL-1124-27	27.0 mH	9.120	0.080
RL-1124-33	33.0 mH	12.180	0.071
RL-1124-39	39.0 mH	14.160	0.071
RL-1124-47	47.0 mH	17.180	0.056
RL-1124-56	56.0 mH	18.710	0.056
RL-1124-68	68.0 mH	27.360	0.043
RL-1124-82	82.0 mH	31.320	0.043
RL-1124-100	100.0 mH	42.840	0.034
RL-1124-120	120.0 mH	47.160	0.034
RL-1124-150	150.0 mH	61.560	0.027
RL-1124-180	180.0 mH	69.120	0.027

## RL-1124 TABLE CONTINUES ON FOLLOWING PAGE

### NOTES:

1. INDUCTANCE VALUES SHOWN IN µH = MICROHENRYS  
mH = MILLIHENRYS AND H = HENRYS
2. ±20% TOLERANCE STANDARD
3. ±10% TOLERANCE OPTIONAL
4. INDUCTANCE TESTED AT 1.0 kHz, 0.1 V<sub>rms</sub>
5. I<sub>rms</sub> - CURRENT THAT CAUSES THE TEMPERATURE TO  
RISE APPROX. 40°C ABOVE AMBIENT OF 25°C
6. ELECTRICAL SPECIFICATIONS MEASURED AT 25°C
7. ENDS EPOXY SEALED
8. PART FINISHED WITH 135°C POLYOLEFIN SLEEVING THAT  
MEETS UL-224 VW-1



**RENCO ELECTRONICS INC.**

595 International Place, Rockledge, FL 32955-4200 USA • www.rencousa.com • ISO 9001 Certified  
Toll Free Engineering Hot Line: 800.645.5828 • P: 321.637.1000 • F: 321.637.1600



# RL-1124

Renco Part No. RL-1124	Inductance	DCR $\pm 20\%$ (Ohms)	I <sub>rms</sub> (A)
RL-1124-220	220.0 mH	90.0	0.0270
RL-1124-270	270.0 mH	100.0	0.0270
RL-1124-330	330.0 mH	117.0	0.0220
RL-1124-390	390.0 mH	125.0	0.0220
RL-1124-470	470.0 mH	183.0	0.0170
RL-1124-560	560.0 mH	206.0	0.0170
RL-1124-680	680.0 mH	282.0	0.0140
RL-1124-820	820.0 mH	356.0	0.0110
RL-1124-1000	1.0 H	410.0	0.0110
RL-1124-1200	1.2 H	568.0	0.0086
RL-1124-1500	1.5 H	634.0	0.0086
RL-1124-1800	1.8 H	950.0	0.0069
RL-1124-2200	2.2 H	964.0	0.0069
RL-1124-2700	2.7 H	987.0	0.0054
RL-1124-3300	3.3 H	1400.0	0.0054
RL-1124-3900	3.9 H	1682.0	0.0054
RL-1124-4700	4.7 H	1700.0	0.0054

#### NOTES:

1. INDUCTANCE VALUES SHOWN IN  $\mu\text{H}$  = MICROHENRYS  
mH = MILLIHENRYS AND H = HENRYS
2.  $\pm 20\%$  TOLERANCE STANDARD
3.  $\pm 10\%$  TOLERANCE OPTIONAL
4. INDUCTANCE TESTED AT 1.0 kHz, 0.1 V<sub>rms</sub>
5. I<sub>rms</sub> - CURRENT THAT CAUSES THE TEMPERATURE TO  
RISE APPROX. 40°C ABOVE AMBIENT OF 25°C
6. ELECTRICAL SPECIFICATIONS MEASURED AT 25°C
7. ENDS EPOXY SEALED
8. PART FINISHED WITH 135°C POLYOLEFIN SLEEVING THAT  
MEETS UL-224 VW-1



**RENCO ELECTRONICS INC.**

595 International Place, Rockledge, FL 32955-4200 USA • [www.rencousa.com](http://www.rencousa.com) • ISO 9001 Certified  
Toll Free Engineering Hot Line: 800.645.5828 • P: 321.637.1000 • F: 321.637.1600

