

RB SERIES

DRUM CORES



DESCRIPTION

- Ferrite Drum Cores

ENVIRONMENTAL DATA

- Storage temperature range: -55°C to +130°C
- Operating temperature range: -40°C to +130°C

PACKAGING INFORMATION

- Packaging information: pg. 495

FEATURES & APPLICATIONS

- Offers a line of eight ferrite drum-core sizes
- Permits the design of a large range of inductance - values and current-ratings in easy-to-use, economical shape factors
- Well-suited as inductive elements in a variety of high DC saturation currents
- The core-material, with its low to moderate loss characteristics, enables practical application frequencies up to several hundred kHz and operating temperatures as high as 130°C

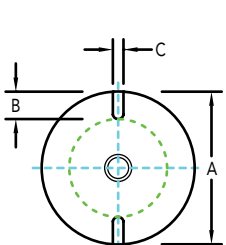
Verify operation with sample in actual circuit. Order samples at www.rencousa.com.

MECHANICAL DIMENSIONS

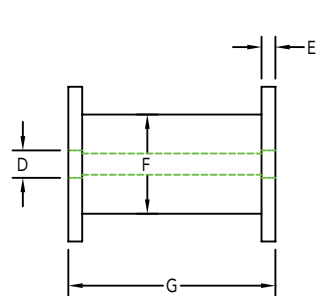
U.S. Standard (mm)

PART No.	A (NOM.)	B (TYP.)	C (TYP.)	D (REF.)	E (NOM.)	F (NOM.)	G (NOM.)	PART WEIGHT
RB-1	0.660 (16.76)	0.105 (2.60)	0.095 (2.40)	#4	0.190 (4.80)	0.375 (9.00)	0.850 (21.59)	10.0g (0.35oz)
RB-2	0.830 (21.08)	0.135 (3.40)	0.115 (2.90)	#4	0.190 (4.80)	0.453 (11.50)	0.850 (21.59)	16.1g (0.57oz)
RB-3	1.100 (27.94)	0.204 (5.20)	0.147 (3.70)	#4	0.190 (4.80)	0.538 (13.60)	0.850 (21.59)	27.9g (0.98oz)
RB-4	1.600 (40.64)	0.275 (6.90)	0.162 (4.10)	#8	0.190 (4.80)	0.835 (21.10)	1.100 (27.94)	68.6g (2.42oz)
RB-5	1.600 (40.64)	0.275 (6.90)	0.162 (4.10)	#8	0.190 (4.80)	0.840 (21.34)	1.450 (36.83)	83.7g (2.95oz)
RB-6	2.000 (50.80)	0.320 (8.10)	0.210 (5.30)	#8	0.215 (5.40)	1.063 (27.00)	1.500 (38.10)	142.8g (5.04oz)
RB-7	2.400 (60.96)	0.390 (9.90)	0.244 (6.20)	#8	0.266 (6.70)	1.311 (33.30)	1.500 (38.10)	223.3g (7.88oz)
RB-8	2.400 (60.96)	0.396 (10.00)	0.257 (6.50)	#8	0.220 (5.50)	1.311 (33.30)	2.550 (64.77)	310.8g (11.0oz)

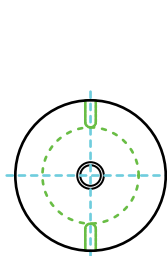
TOP VIEW



SIDE VIEW



BOTTOM VIEW



ELECTRICAL/MAGNETIC CHARACTERISTICS:

1. MAGNETIC PROPERTIES:

CORE MATERIAL: FERRITE: $\mu_o=2000$, NOM; $B_{sat}=4800$, TYP. @ 25°C; CURIE TEMPERATURE, $T_C, \geq 180^\circ\text{C}$

2. CORE COATING: BLACK EPOXY

3. ELECTRICAL CHARACTERISTICS:

INDUCTANCE FACTOR; A_L (NOM), mH PER 1000 TURNS:
 RB-1, 53.0; RB-2, 66.0; RB-3, 88.0; RB-4, 129.0; RB-5, 114.0;
 RB-6, 160.0; RB-7, 220.0; RB-8, 170.0;

NOTES:

- ALL DIMENSIONS NOMINAL WITH COATING 500VDC HIPOT
- "D" DIAMETER PROVIDES CLEARANCE FOR INDICATED SCREW SIZE. NYLON OR BRASS ONLY
- FOR MOUNTING ON CONDUCTIVE SURFACES, INSULATING WASHER RECOMMENDED. CONSULT FACTORY FOR INSTALLATION ALTERNATIVE



RENCO ELECTRONICS INC.

595 International Place, Rockledge, FL 32955-4200 USA • www.rencousa.com • ISO 9001 Certified
 Toll Free Engineering Hot Line: 800.645.5828 • P: 321.637.1000 • F: 321.637.1600

