

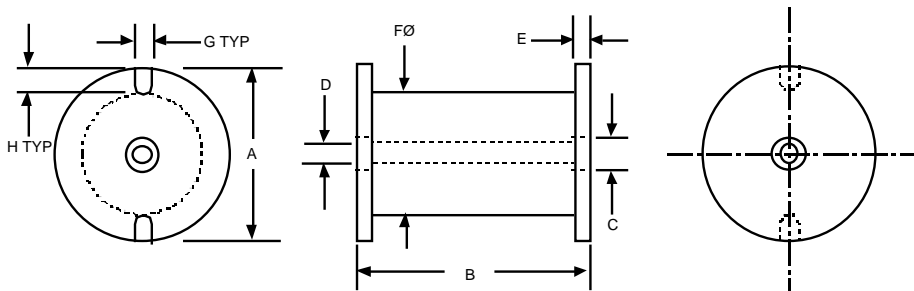


RB Series DRUM CORES

Renco offers a line of eight (8) ferrite drum-core sizes. These permit the design of a large range of inductance - values and current-ratings in easy-to-use, economical shape factors. They are well-suited as inductive elements in a variety of high DC saturation currents. The core-material, with its low to moderate loss characteristics, enables practical application frequencies up to several hundred kilohertz and operating temperatures as high as 190°C.

Notes	DIM (inches)	RB-1	RB-2	RB-3	RB-4	RB-5	RB-6	RB-7	RB-8
1)		NOM	NOM	NOM	NOM	NOM	NOM	NOM	NOM
	A	.569	.719	.960	1.42	1.47	1.47	1.79	2.20
	B	.802	.802	.802	1.03	1.40	1.42	1.43	2.32
3)	C	.188	.188	.188	.275	.275	.356	.398	.398
2)	D, Clear	#4	#4	#4	#8	#8	#8	#8	#8
	E	.158	.158	.158	.149	.149	.188	.221	.221
	F Ø	.353	.431	.510	.813	.813	1.056	1.295	1.285
	G	.075	.102	.116	.120	.123	.155	.155	.163
	H	.07	.108	.190	.250	.27	.37	.35	.35

- 1) All dimensions, nominal, with coating; 1000VRMS HIPOT.
- 2) "D" DIA provides clearance for indicated screw-size; nylon or brass only.
- 3) For mounting on conductive surfaces, insulating washer recommended. For "C" DIA of .188, use .25 DIA; For .275 DIA, use .38 DIA; for .356 DIA, use .50 DIA. Consult factory for installation alternatives.



ELECTRICAL/MAGNETIC CHARACTERISTICS

MAGNETIC PROPERTIES

Core-Material: Ferrite; $\mu = 2000$, Nom; $B_{sat} = 4800$, Typ @ 25°C; CURIE temperature, TC, 180°C.

CORE COATING - Black Epoxy

ELECTRICAL CHARACTERISTICS

INDUCTANCE FACTOR; A_L (NOM), mH per 1000 turns:

RB-1, 53.0; RB-2, 66.0; RB-3, 88.0; RB-4, 129.0; RB-5, 114.0; RB-6, 160.0; RB-7, 2200; RB-8, 160.0



RENCO ELECTRONICS, INC.

✉ 595 International Place, Rockledge, FL 32955-4200 USA

☎ (321) 637-1000 • Toll Free Engineering Hot Line 800-645-5828

📠 Fax: (321) 637-1600 🌐 Web Site: www.rencousa.com ✉ E-Mail: sales@rencousa.com