

NATIONAL SEMICONDUCTOR® SIMPLE SWITCHER® APPLICATIONS

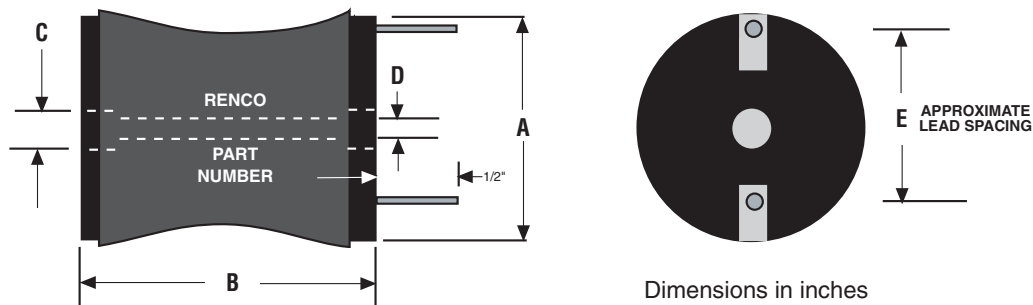


This Power Line Choke Series uses high saturation flux density material making them ideal for use in switching regulated power supplies and wherever high current chokes, in small physical sizes, are needed.

Inductances range from 47 μ H to 2200 μ H with DC saturation currents up to 20 Amps.

Renco component operation validated by National Semiconductor.

ELECTRICAL SPECIFICATIONS					MAXIMUM PHYSICAL DIMENSIONS						
Renco Part Number	Inductance @ 1KHz $\pm 10\%$ (μ H)	Max. DCR (Ohms)	Saturation Current (DC Amps)	Sugg. Rated Current (AC Amps)	A MAX.	B MAX.	C MAX.	D MAX.	E TYP.	Lead Length Min. (in)	Lead Dia. Typ.
RL-1954	150	.098	8.6	4.0	.825	.840	.195	.593	.593	0.5	.032
RL-1956	68	.053	12.7	4.8	.825	.840	.195	.656	.656	0.5	.036
RL-1957	47	.024	18.1	9.0	1.1	.840	.195	.750	.750	0.5	.052
RL-1958	1500	1.26	2.4	0.8	.825	.840	.195	.590	.590	0.5	.016
RL-1959	1000	.818	3.1	1.0	.825	.840	.195	.590	.590	0.5	.018
RL-1960	680	.430	3.7	1.6	.825	.840	.195	.590	.590	0.5	.023
RL-1961	470	.187	6.0	4.0	1.1	.840	.195	.750	.750	0.5	.032
RL-1962	330	.122	7.1	4.5	1.1	.840	.195	.812	.812	0.5	.036
RL-1963	220	.080	8.7	5.5	1.1	.840	.195	.593	.593	0.5	.042
RL-1964	150	.040	16.4	11.4	1.6	1.1	.290	1.125	1.125	0.5	.058
RL-1965	100	.025	20.0	14.4	1.6	1.1	.290	1.140	1.140	0.5	.065
RL-2442	47	.035	15.0	5.5	.825	.840	.195	.625	.625	0.5	.042
RL-2443	68	.053	12.7	4.8	.825	.840	.195	.656	.656	0.5	.036
RL-2444	100	.080	10.4	4.0	.825	.840	.195	.593	.593	0.5	.032
RL-2445	150	.098	8.6	4.0	.825	.840	.195	.593	.593	0.5	.032
RL-2446	220	.080	8.7	5.5	1.1	.840	.195	.781	.781	0.5	.042
RL-2447	330	.122	7.1	4.5	1.1	.840	.195	.812	.812	0.5	.036
RL-2448	2200	1.54	2.0	0.8	.825	.840	.195	.590	.590	0.5	.016



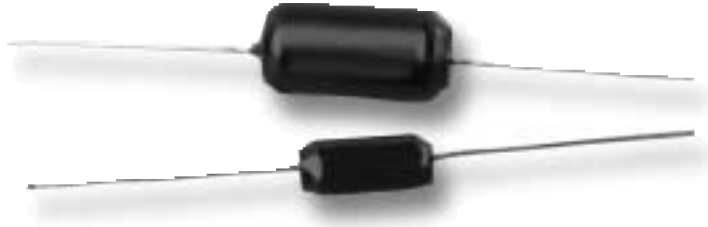
RENCO ELECTRONICS, INC.

595 International Place, Rockledge, FL 32955-4200 USA

(321) 637-1000 • Toll Free Engineering Hot line 800-645-5828

Fax: (321) 637-1600 Web Site: www.rencousa.com E-mail: sales@rencousa.com

NATIONAL SEMICONDUCTOR® SIMPLE SWITCHER® APPLICATIONS



This Series of Power Line Chokes has inductances from 100 μ H to 680 μ H with saturation currents available from 2.79 Amps to 0.70 Amp. The use of high saturation material make these coils ideal for use in switching regulated power supply type applications. The size of the coils make them easy to install in equipment.

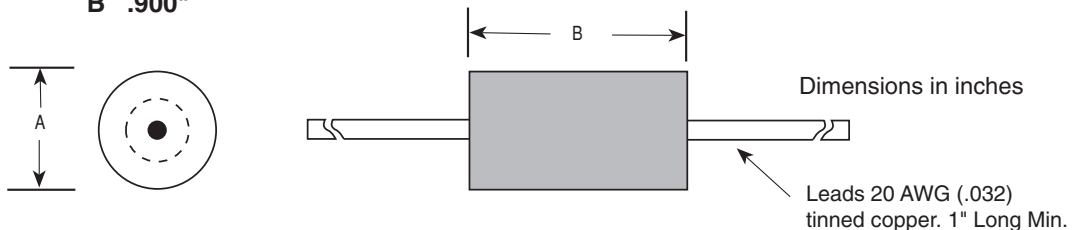
TYPICAL APPLICATIONS

- Switching Regulators
- Power Amplifiers
- Power Supplies
- SCR and Triac Controls
- RFI Suppression
- Filters

ELECTRICAL SPECIFICATIONS					MAXIMUM PHYSICAL DIMENSIONS			
Renco Part Number	Inductance @ 1KHz $\pm 10\%$ (μ H)	Max. DCR (Ohms)	Saturation Current (DC Amps)	Sugg. Rated Current (AC Amps)	A MAX.	B MAX.	Lead Length Min. (in)	Lead Dia. Typ.
RL-1950	680	.575	.70	1.0	.453	.900	1.0	.032
RL-1951	470	.400	.82	1.2	.453	.900	1.0	.032
RL-1952	330	.300	1.00	1.6	.453	.900	1.0	.032
RL-1953	220	.175	1.25	1.6	.453	.900	1.0	.032
RL-1955	100	.090	2.79	1.6	.453	.900	1.0	.032
RL-3901	330	.665	.70	.40	.250	.650	1.0	.032

MAXIMUM PHYSICAL DIMENSIONS:

ALL
A .453"
B .900"



RENCO ELECTRONICS, INC.

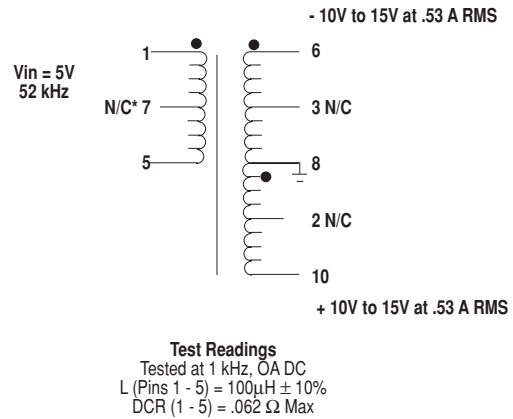
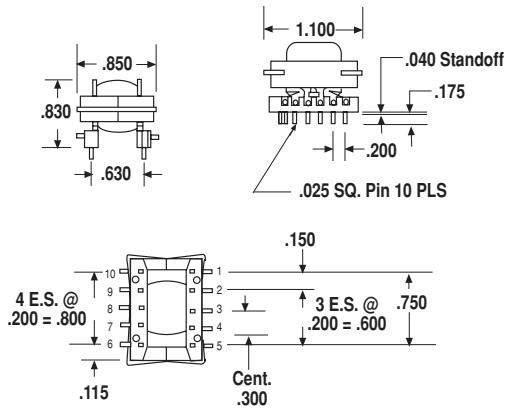
595 International Place, Rockledge, FL 32955-4200 USA

(321) 637-1000 • Toll Free Engineering Hot line 800-645-5828

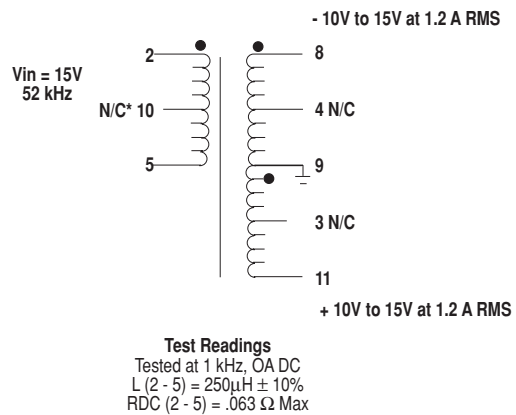
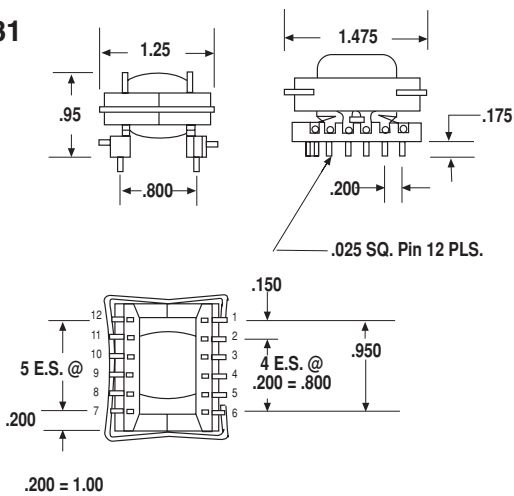
Fax: (321) 637-1600 Web Site: www.rencousa.com E-mail: sales@rencousa.com

DESIGNED FOR NATIONAL SEMICONDUCTOR SIMPLE SWITCHER™

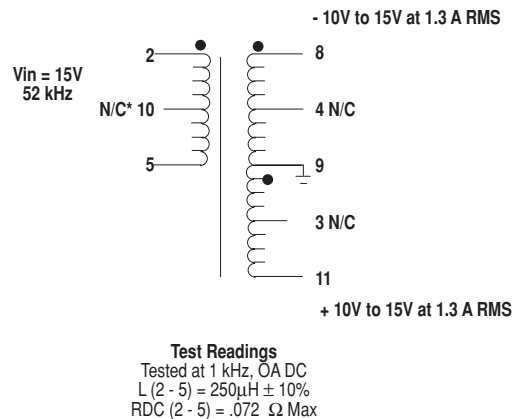
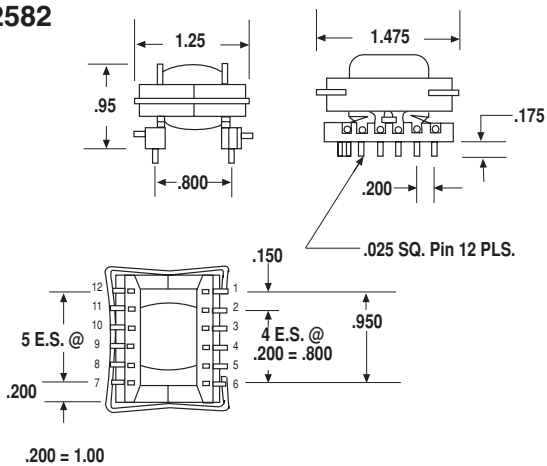
RL-2580



RL-2581



RL-2582



* No Connection (internal connection not for customer use)



RENCO ELECTRONICS, INC.

595 International Place, Rockledge, FL 32955-4200 USA

(321) 637-1000 • Toll Free Engineering Hot line 800-645-5828

SINCE 1955



Fax: (321) 637-1600



Web Site: www.rencousa.com



E-mail: sales@rencousa.com