

# RL-6600

## POWER-DISC™ INDUCTOR



The RL-6600 Series of Power-Disc Inductors is available in 114 standard values covering a wide range of inductance and current. The use of high saturation flux density material make these coils ideal for use in switching regulated power supply applications and wherever high current choke values in a small physical height are needed.

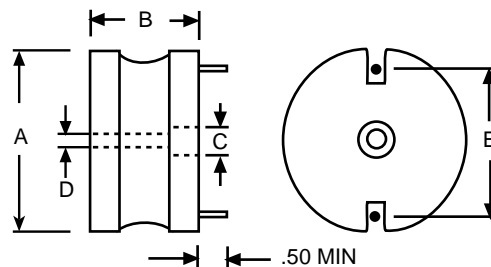
### Typical Applications:

- Switching Regulators
- Power Amplifiers
- Power Supplies
- SCR and Triac Controls
- Speaker Crossover Networks
- RFI Suppression
- Filters

#### MAXIMUM DIMENSIONS:

Part No.	Type	A	B	C	D
RL-6600-1		1.60	.68	.290	For 8/32
RL-6600-2		2.00	.74	.375	Screw
RL-6600-3		2.40	.74	.425	With Washer

ALL DIMENSIONS IN INCHES



NOTE: See specification tables for "E" dim.



### RENCO ELECTRONICS, INC.

✉ 595 International Place, Rockledge, FL 32955-4200 USA

☎ (321) 637-1000 • Toll Free Engineering Hot line 800-645-5828

📠 Fax: (321) 637-1600 🌐 Web Site: [www.rencousa.com](http://www.rencousa.com) 📧 E-mail: [sales@rencousa.com](mailto:sales@rencousa.com)

<b>RL-6600-1</b>					
Renco Part No.	Inductance ODC ( $\mu$ H)	Max. DCR (Ohms) (DC Amp)	Saturation Current	Rated Current (Amp)	Dimension "E" Approx.
RL-6600-1-2.2	2.2	.0028	152.0	28.2	1.10
RL-6600-1-3.9	3.9	.0037	118.2	27.2	1.10
RL-6600-1-4.7	4.7	.0040	96.7	25.7	1.10
RL-6600-1-6.8	6.8	.0048	81.9	23.7	1.10
RL-6600-1-8.2	8.2	.0055	71.0	22.0	1.16
RL-6600-1-12	12	.0067	62.6	20.7	1.16
RL-6600-1-15	15	.0070	56.0	20.5	1.16
RL-6600-1-18	18	.0094	50.7	20.5	1.16
RL-6600-1-22	22	.0103	46.3	20.4	1.18
RL-6600-1-27	27	.0121	39.4	18.9	1.18
RL-6600-1-33	33	.0163	36.7	14.0	1.17
RL-6600-1-39	39	.0173	34.3	13.6	1.17
RL-6600-1-47	47	.0196	30.4	12.8	1.17
RL-6600-1-56	56	.0208	28.8	12.4	1.18
RL-6600-1-68	68	.0292	26.0	10.7	1.17
RL-6600-1-82	82	.0319	23.7	10.2	1.18
RL-6600-1-100	100	.0348	21.7	9.8	1.18
RL-6600-1-120	120	.048	19.4	8.3	1.18
RL-6600-1-150	150	.053	17.5	7.9	1.18
RL-6600-1-180	180	.0743	15.9	6.4	1.18
RL-6600-1-220	220	.0833	14.6	6.0	1.19
RL-6600-1-270	270	.094	12.8	5.7	1.19
RL-6600-1-330	330	.127	11.7	4.8	1.12
RL-6600-1-390	390	.138	10.8	4.6	1.12
RL-6600-1-470	470	.184	9.8	4.1	1.12
RL-6600-1-560	560	.203	9.0	3.9	1.12
RL-6600-1-680	680	.279	8.1	3.2	1.12
RL-6600-1-820	820	.314	7.5	3.1	1.12
RL-6600-1-1000	1000	.348	6.7	2.9	1.14
RL-6600-1-1200	1200	.494	6.2	2.4	1.15
RL-6600-1-1500	1500	.548	5.5	2.3	1.14
RL-6600-1-1800	1800	.732	5.1	1.95	1.14
RL-6600-1-2200	2200	.809	4.5	1.80	1.12
RL-6600-1-2700	2700	.120	4.1	1.53	1.13
RL-6600-1-3300	3300	.182	3.7	1.46	1.13
RL-6600-1-3900	3900	.380	3.4	1.40	1.13

**NOTES:**

1. Saturation current lowers inductance 5%
2. Inductance  $\pm 10\%$  measured at 1KHz, values below  $10\mu\text{H} \pm 20\%$
3. Leads for PC mounting tinned to within  $1/16"$  of body
4. Non-listed values available on request
5. Coils finished with sleeving UL-VW-1 rated
6. Center hole for mechanical mounting
7. 1000VAC RMS hi pot
8. RDC measured @  $20^\circ\text{C}$
9. Spacer available at additional cost to facilitate PC board washing



## **RENCO ELECTRONICS, INC.**

✉ 595 International Place, Rockledge, FL 32955-4200 USA

☎ (321) 637-1000 • Toll Free Engineering Hot line 800-645-5828

📠 Fax: (321) 637-1600 🌐 Web Site: [www.rencousa.com](http://www.rencousa.com) 📧 E-mail: [sales@rencousa.com](mailto:sales@rencousa.com)

<b>RL-6600-2</b>					
Renco Part No.	Inductance ODC ( $\mu$ H)	Max. DCR (Ohms)	Saturation Current (DC Amp)	Rated Current (Amp)	Dimension "E" Approx.
RL-6600-2-2.2	2.2	.0021	205	34.7	1.21
RL-6600-2-3.3	3.3	.0026	147	31.0	1.29
RL-6600-2-5.6	5.6	.0036	114	31.0	1.29
RL-6600-2-8.2	8.2	.0041	93.5	30.4	1.29
RL-6600-2-12	12	.0047	79	29.6	1.37
RL-6600-2-15	15	.0055	68.5	27.6	1.39
RL-6600-2-18	18	.0062	60.5	25.9	1.37
RL-6600-2-22	22	.0068	54.1	24.5	1.37
RL-6600-2-27	27	.0077	48.9	23.3	1.37
RL-6600-2-33	33	.0084	44.7	22.3	1.37
RL-6600-2-39	39	.0112	41.4	18.4	1.17
RL-6600-2-47	47	.0132	35.4	18.0	1.17
RL-6600-2-56	56	.0142	33.2	17.5	1.44
RL-6600-2-68	68	.0180	31.2	15.6	1.44
RL-6600-2-82	82	.0202	27.8	14.8	1.43
RL-6600-2-100	100	.0223	25.1	14.0	1.43
RL-6600-2-120	120	.0324	22.8	11.7	1.44
RL-6600-2-150	150	.0368	20.2	11.0	1.44
RL-6600-2-180	180	.0468	18.7	9.5	1.44
RL-6600-2-220	220	.0520	16.9	9.0	1.44
RL-6600-2-270	270	.0587	14.9	8.5	1.46
RL-6600-2-330	330	.0780	14.1	7.8	1.46
RL-6600-2-390	390	.0844	13.0	7.5	1.45
RL-6600-2-470	470	.120	11.5	6.5	1.43
RL-6600-2-560	560	.131	10.6	6.2	1.44
RL-6600-2-680	680	.142	9.8	6.0	1.46
RL-6600-2-820	820	.187	8.8	4.9	1.45
RL-6600-2-1000	1000	.206	8.0	4.7	1.45
RL-6600-2-1200	1200	.301	7.4	3.85	1.45
RL-6600-2-1500	1500	.353	6.6	3.74	1.46
RL-6600-2-1800	1800	.383	5.8	3.43	1.46
RL-6600-2-2200	2200	.548	5.4	2.90	1.45
RL-6600-2-2700	2700	.793	4.74	2.28	1.46
RL-6600-2-3300	3300	.874	4.3	2.15	1.45
RL-6600-2-3900	3900	.948	3.97	2.08	1.46
RL-6600-2-4700	4700	1.24	3.6	2.00	1.46
RL-6600-2-5600	5600	1.40	3.3	1.88	1.46
RL-6600-2-6800	6800	1.84	3.0	1.80	1.46
RL-6600-2-8200	8200	2.38	2.79	1.50	1.47
RL-6600-2-10000	10000	2.75	2.53	1.40	1.47



## **RENCO ELECTRONICS, INC.**

✉ 595 International Place, Rockledge, FL 32955-4200 USA

☎ (321) 637-1000 • Toll Free Engineering Hot line 800-645-5828

📠 Fax: (321) 637-1600 🌐 Web Site: [www.rencousa.com](http://www.rencousa.com) 📧 E-mail: [sales@rencousa.com](mailto:sales@rencousa.com)

<b>RL-6600-3</b>					
Renco Part No.	Inductance ODC (μH)	Max. DCR (Ohms)	Saturation Current (DC Amp)	Rated Current (Amp)	Dimension "E" Approx.
RL-6600-3-1.0	1.0	.0018	350	44	1.52
RL-6600-3-2.2	2.2	.0024	213	40	1.52
RL-6600-3-4.7	4.7	.003	152	36	1.60
RL-6600-3-8.2	8.2	.0041	93.5	30.4	1.29
RL-6600-3-12	12	.0053	97	30	1.64
RL-6600-3-15	15	.0060	82	28	1.69
RL-6600-3-18	18	.0067	71	27	1.77
RL-6600-3-22	22	.0076	62	26	1.77
RL-6600-3-27	27	.0085	56	24	1.77
RL-6600-3-33	33	.0094	51	23	1.86
RL-6600-3-39	39	.013	46	20	1.86
RL-6600-3-47	47	.015	42	19	1.78
RL-6600-3-56	56	.016	39	18	1.88
RL-6600-3-68	68	.021	36	16	1.88
RL-6600-3-82	82	.024	32	14	1.82
RL-6600-3-100	100	.031	30	13	1.77
RL-6600-3-120	120	.035	27	12	1.87
RL-6600-3-150	150	.045	25	11	1.77
RL-6600-3-180	180	.055	22	9.5	1.83
RL-6600-3-220	220	.076	20	8.0	1.75
RL-6600-3-270	270	.084	18	8.0	1.80
RL-6600-3-330	330	.093	16	7.5	1.80
RL-6600-3-390	390	.127	15	6.5	1.80
RL-6600-3-470	470	.138	14	6.0	1.80
RL-6600-3-560	560	.192	13	5.0	1.80
RL-6600-3-680	680	.210	11	5.0	1.76
RL-6600-3-820	820	.287	10	4.0	1.69
RL-6600-3-1000	1000	.320	9.5	4.0	1.72
RL-6600-3-1200	1200	.349	8.5	3.8	1.76
RL-6600-3-1500	1500	.492	7.8	3.2	1.72
RL-6600-3-1800	1800	.544	7.0	3.0	1.75
RL-6600-3-2200	2200	.691	6.25	2.3	1.71
RL-6600-3-2700	2700	.764	5.65	2.2	1.77
RL-6600-3-3300	3300	1.027	5.21	1.98	1.71
RL-6600-3-3900	3900	1.113	4.79	1.90	1.70
RL-6600-3-4700	4700	1.565	4.36	1.65	1.72
RL-6600-3-5600	5600	1.700	4.00	1.58	1.72
RL-6600-3-6800	6800	1.854	3.58	1.80	1.46



## **RENCO ELECTRONICS, INC.**

✉ 595 International Place, Rockledge, FL 32955-4200 USA

☎ (321) 637-1000 • Toll Free Engineering Hot line 800-645-5828

📠 Fax: (321) 637-1600 🌐 Web Site: [www.rencousa.com](http://www.rencousa.com) 📧 E-mail: [sales@rencousa.com](mailto:sales@rencousa.com)