

RL-2600

FERRITE CORE TRANSFORMERS

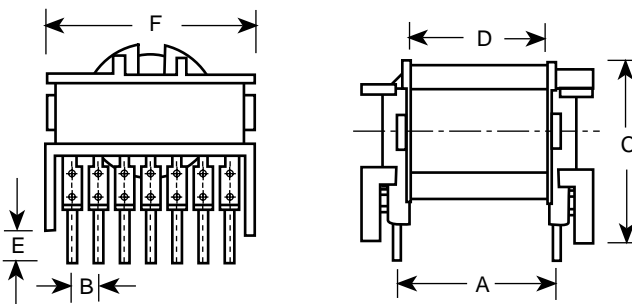
INTERNATIONAL



The RL-2600 Series custom packages have advanced technology ferrite cores resulting in greater throughput power and higher efficiencies over the range of 10kHz to 500kHz. High grade, glassfilled UL94-VO bobbins are designed with optimum height and width to keep winding losses at a minimum. Transformers can be supplied to meet a broad range of single or multiple voltages, current or power specifications. Our large inventory of bobbins and cores assures prompt delivery.

Features:

- Power ranges up to 1800 Watts
- Meet VDE, IEC, UL, and CSA specifications
- UL Class 130°C insulation
- Easy PC board insertion
- Meets European safety standards



STYLE NO.	TYPICAL DIMENSIONS						TERMINAL	
	A	B	C	D	E	F	NO.	SIZE
RL-2600-0	1.000	.200	.980	.776	.190	1.400	13	.032
RL-2600-1	1.000	.200	1.300	.827	.190	1.570	14	.039
RL-2600-2	1.200	.200	1.438	1.008	.190	1.750	16	.039
RL-2600-3	1.400	.200	1.590	1.165	.190	1.945	18	.039
RL-2600-4	1.600	.200	1.630	1.291	.190	2.150	20	.039
RL-2600-5	1.800	.200	1.820	1.449	.190	2.420	22	.039
RL-2600-6	2.000	.200	1.950	1.622	.190	2.630	24	.039



ALL DIMENSIONS IN INCHES

DESIGN NOTES:

1. Primary to secondary isolation 3750V RMS-Min.
2. All designs meet class B requirements (130°C).
3. Encapsulation available
4. Winding to core isolation 3750V RMS min.
5. Higher isolation voltages available.
6. Higher Temperature classes available.

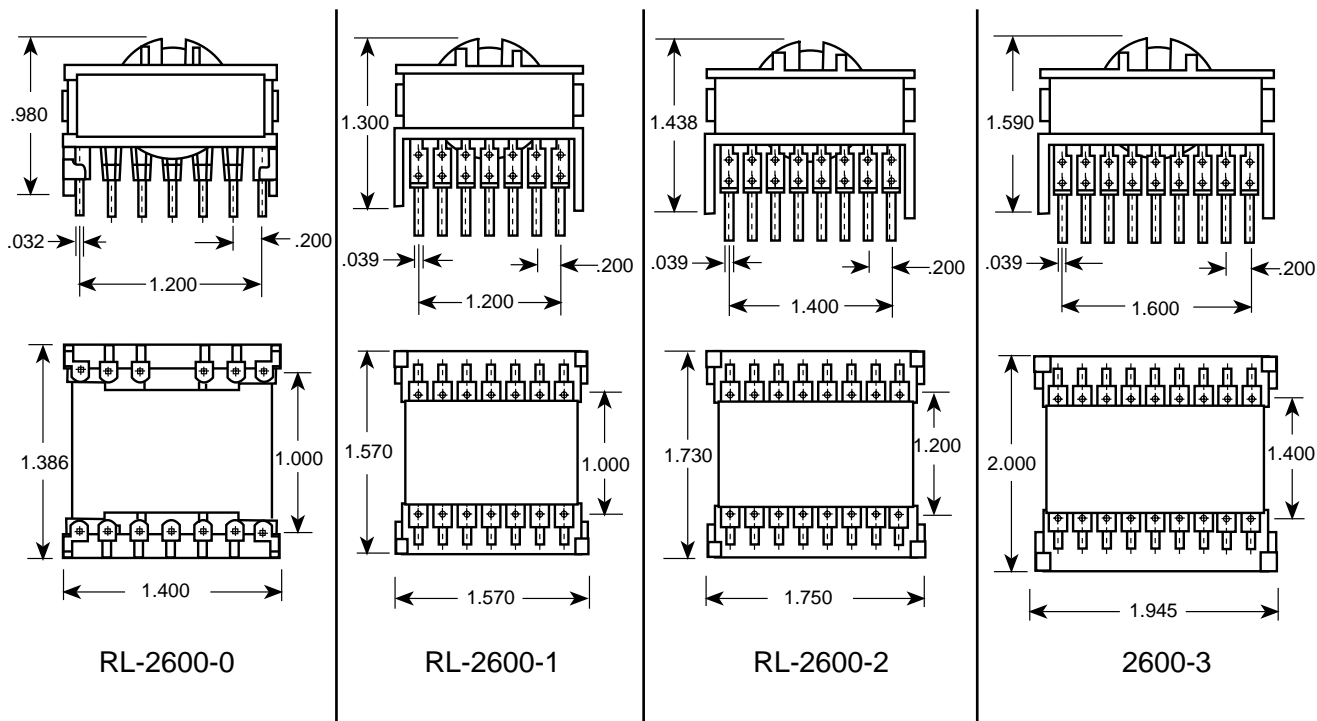


RENCO ELECTRONICS, INC.

✉ 595 International Place, Rockledge, FL 32955-4200 USA

☎ (321) 637-1000 • Toll Free Engineering Hot line 800-645-5828

☎ Fax: (321) 637-1600 🌐 Web Site: www.rencousa.com 📧 E-mail: sales@rencousa.com



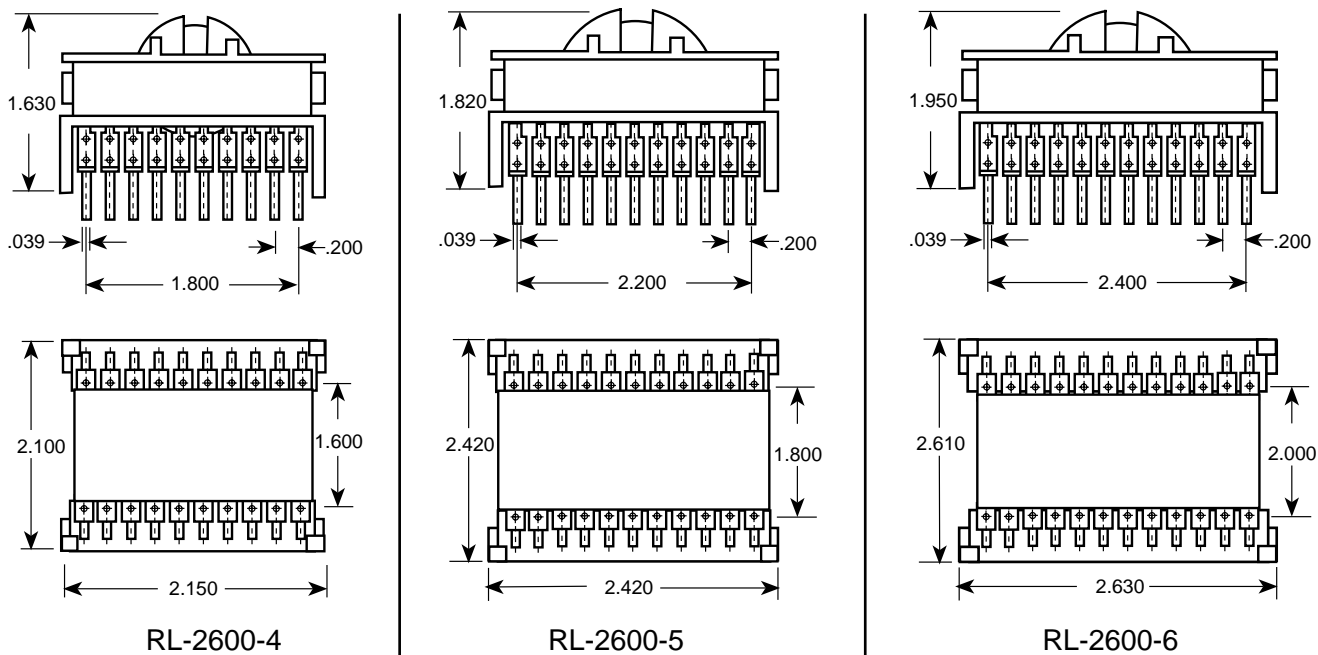
RL-2600-0

RL-2600-1

RL-2600-2

2600-3

ALL DIMENSIONS IN INCHES



RL-2600-4

RL-2600-5

RL-2600-6



RENCO ELECTRONICS, INC.

✉ 595 International Place, Rockledge, FL 32955-4200 USA

☎ (321) 637-1000 • Toll Free Engineering Hot line 800-645-5828

📠 Fax: (321) 637-1600 🌐 Web Site: www.rencousa.com ✉ E-mail: sales@rencousa.com